

# Mason Moor Primary School, Nursery & SEND Units



## Safeguarding & Child Protection Policy

2025 - 2026

### Safeguarding & Child Protection 2025-2026

<b>Approved by:</b>	Governing Body	<b>Approval date:</b>	September 2025
<b>Last review date:</b>	September 2025	<b>Contact:</b>	info@masonmoor
<b>Next review date:</b>	September 2026	<b>Approvers signature:</b>	Amanda Humby

Named personnel with designated responsibility for Safeguarding at Mason Moor Primary School, Nursery and SEN Units				
Academic Year	Designated Safeguarding Lead	Deputy Designated Safeguarding Leads	Safeguarding Governor	Chair of the Governing Body
2025-26	Faye Bauck (Head of School)	Davina Ashbolt-Smith (Deputy Headteacher)	Paul Caveliere	Amanda Humby
Named personnel with designated responsibility regarding allegations against staff				
Academic Year	Designated Senior Manager	Deputy Designated Senior Manager	Nominated Safeguarding Governor	Chair of the Governing Body
2025-26	Daniel Constable-Phelps (Executive Headteacher)	Faye Bauck (Head of School)	Paul Caveliere	Amanda Humby

## Mason Moor Primary School's mission statement:

---

*At Mason Moor Primary School, no child is left behind. Where you live, and your current personal circumstances, do not dictate your destiny. Every member of staff is aligned to our three core values; drivers for everything we do. Central to our philosophy on improving life-chances, is the relentless pursuit of the value 'nurture' – a continuous focus on positive regard for all.*

## Our values:

---



### Nurture

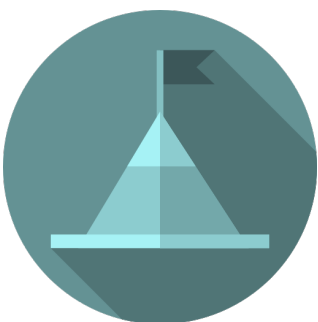
We demonstrate and live this value through building unconditional positive praise for all who work at Mason Moor.

*"No significant learning can occur without a significant relationship" (James Comer)*



### Grow

We demonstrate and live this value through opportunities to grow – for example through our Character Development Curriculum and wider enrichment enabling all pupils to grow as confident, articulate individuals.



### Achieve

We ensure that there are no perceived (or real) ceiling limits placed on a child's potential. To this end, we expect staff to be every child's champion. Children here are developed to feel self-worth, to know their place in the world and to know they matter.

Every child deserves a champion. An adult who will never give up on them, who understands the power of connection and who insists that they become the best they can possibly be.

## 1. Aims of this policy

Mason Moor Primary School and Nursery recognise our statutory responsibility to safeguard and promote the welfare of all pupils. We will endeavour to provide a **safe and welcoming environment where children are respected and valued**. We will be alert to the signs of abuse and neglect and follow our procedures to ensure that children receive effective support, protection and justice.

Safeguarding is everyone's responsibility. We commit our school to being part of a wider safeguarding system and work closely with Southampton's Children's Resource Service (formerly MASH) and other agencies to promote the welfare of children. **We maintain an attitude of 'it could happen here'** and will consider the wishes of, and at all times what is in the best interests of, each child.

**We understand that children may be abused by adults or by other children.** We are committed to creating a culture of safety, that minimises the opportunity for any form of abuse (including all forms of child-on-child abuse) through training, education and robust response procedures.

### The aim of this policy is:

---

The school aims to ensure that:

- Appropriate action is taken in a timely manner to safeguard and promote children's welfare
- All staff are aware of their statutory responsibilities with respect to safeguarding
- Staff are properly trained in recognising and reporting safeguarding issues

## 2. Legislation and statutory guidance

This policy is based on the Department for Education's (DfE's) statutory guidance **Keeping Children Safe in Education (2025), Working Together to Safeguard Children (2023 – updated February 2024)** and departmental advice **'What to do if you're worried a child is being abused: advice for practitioners'**. We comply with this guidance and the arrangements agreed and published by our local safeguarding partners which is further explained in Section 3.

This policy is also based on the following legislation:

- The Children Act 1989 (and 2004 amendment), which provides a framework for the care and protection of children
- Section 5B(11) of the Female Genital Mutilation Act 2003, as inserted by section 74 of the Serious Crime Act 2015, which places a statutory duty on teachers to report to the police where they discover that female genital mutilation (FGM) appears to have been carried out on a girl under 18
- Statutory guidance on FGM, which sets out responsibilities with regards to safeguarding and supporting girls affected by FGM
- Working Together to Improve School Attendance 2024.
- The Rehabilitation of Offenders Act 1974, which outlines when people with criminal convictions can work with children
- Schedule 4 of the Safeguarding Vulnerable Groups Act 2006, which defines what 'regulated activity' is in relation to children
- Statutory guidance on the Prevent duty, which explains schools' duties under the Counter-Terrorism and Security Act 2015 with respect to protecting people from the risk of radicalisation and extremism
- The Human Rights Act 1998, which explains that being subjected to harassment, violence and/or abuse, including that of a sexual nature, may breach any or all of the rights which
- apply to individuals under the European Convention on Human Rights (ECHR)

- The Equality Act 2010, which makes it unlawful to discriminate against people regarding particular protected characteristics (including disability, sex, sexual orientation, gender reassignment and race). This means our governors and leadership team should carefully consider how they are supporting their pupils with regard to these characteristics. The Act allows our school to take positive action to deal with particular disadvantages affecting pupils (where we can show it's proportionate). This includes making reasonable adjustments for disabled pupils. For example, it could include taking positive action to support girls where there's evidence that they're being disproportionately subjected to sexual violence or harassment.
- The Public Sector Equality Duty (PSED), which explains that we must have due regard to eliminating unlawful discrimination, harassment and victimisation. The PSED helps us to focus on key issues of concern and how to improve pupil outcomes. Some pupils may be more at risk of harm from issues such as sexual violence; homophobic, biphobic or transphobic bullying; or racial discrimination
- The Childcare (Disqualification) and Childcare (Early Years Provision Free of Charge) (Extended Entitlement) (Amendment) Regulations 2018 (referred to in this policy as the "2018 Childcare Disqualification Regulations") and Childcare Act 2006, which set out who is disqualified from working with children.
- This policy also meets requirements relating to safeguarding and welfare in the statutory framework for the Early Years Foundation Stage
- Further guidance from the Southampton Safeguarding Children's Partnership can be found here: <https://www.southampton.gov.uk/children-families/childrens-social-care/southampton-safeguarding-children-partnership/>

## Reference to local guidance and Southampton City Council protocols:

### Use of Local Authority Toolkits

Staff will make use of Southampton Local Authority safeguarding toolkits and guidance to support robust practice. This includes (but is not limited to):

- Threshold guidance
- Neglect toolkit
- Online safety toolkit
- Harmful sexual behaviour toolkit

Direct links to these resources are available on the school's safeguarding page and will be signposted in staff training.

## 3. Definitions

**Safeguarding and promoting the welfare of children** means:

- Protecting children from maltreatment
- Preventing impairment of children's mental and physical health or development
- Ensuring that children grow up in circumstances consistent with the provision of safe and effective care
- Taking action to enable all children to have the best outcomes

**Child protection** is part of this definition and refers to activities undertaken to prevent children suffering, or being likely to suffer, significant harm.

**Abuse** is a form of maltreatment of a child. Somebody may abuse or neglect a child by inflicting harm or by failing to act to prevent harm. Harm can include ill treatment that is not physical as well as the impact of witnessing ill treatment of others. This can be particularly relevant, for example, in relation to the impact on children of all forms of domestic abuse, including where they see, hear or experience its effects. Children may be abused in a family or in an institutional or community setting by those known to them or, more rarely, by others. Abuse can take place wholly online, or technology may be used to facilitate offline abuse.

**Physical Abuse** is a form of abuse which may involve hitting, shaking, throwing, poisoning, burning or scalding, drowning, suffocating or otherwise causing physical harm to a child. Physical harm may also be caused when a parent or carer fabricates the symptoms of, or deliberately induces, illness in a child.

**Emotional Abuse:** the persistent emotional maltreatment of a child such as to cause severe and adverse effects on the child's emotional development. It may involve conveying to a child that they are worthless or unloved, inadequate, or valued only insofar as they meet the needs of another person. It may include not giving the child opportunities to express their views, deliberately silencing them or 'making fun' of what they say or how they communicate. It may feature age or developmentally inappropriate expectations being imposed on children. These may include interactions that are beyond a child's developmental capability as well as overprotection and limitation of exploration and learning or preventing the child from participating in normal social interaction. It may involve seeing or hearing the ill treatment of another. It may involve serious bullying (including cyberbullying), causing children frequently to feel frightened or in danger, or the exploitation or corruption of children. Some level of emotional abuse is involved in all types of maltreatment of a child, although it may occur alone.

**Sexual abuse** involves forcing or enticing a child or young person to take part in sexual activities, not necessarily involving violence, whether or not the child is aware of what is happening. The activities may involve physical contact, including assault by penetration (for example rape or oral sex) or non-penetrative acts such as masturbation, kissing, rubbing, and touching outside of clothing. They may also include non-contact activities, such as involving children in looking at, or in the production of, sexual images, watching sexual activities, encouraging children to behave in sexually inappropriate ways, or grooming a child in preparation for abuse. Sexual abuse can take place online, and technology can be used to facilitate offline abuse. Sexual abuse is not solely perpetrated by adult males. Women can also commit acts of sexual abuse, as can other children. The sexual abuse of children by other children is a specific safeguarding issue in education and all staff should be aware of it and of their school or college's policy and procedures for dealing with it.

**Neglect** is the persistent failure to meet a child's basic physical and/or psychological needs, likely to result in the serious impairment of the child's health or development. Neglect may occur during pregnancy, for example, as a result of maternal substance abuse. Once a child is born, neglect may involve a parent or carer failing to: provide adequate food, clothing and shelter (including exclusion from home or abandonment); protect a child from physical and emotional harm or danger; ensure adequate supervision (including the use of inadequate caregivers); or ensure access to appropriate medical care or treatment. It may also include neglect of, or unresponsiveness to, a child's basic emotional needs.

**Domestic Abuse** can encompass a wide range of behaviours and may be a single incident or a pattern of incidents. Children can be victims of domestic abuse.

**Sharing of nudes and semi-nudes** (also known as sexting or youth-produced sexual imagery) is where children share nude or semi-nude images, videos or live streams.

**Children** includes everyone under the age of 18.

The following 3 **safeguarding partners** are identified in Keeping Children Safe in Education (and defined in the Children Act 2004, as amended by chapter 2 of the Children and Social Work Act 2017). They will make arrangements to work together to safeguard and promote the welfare of local children, including identifying and responding to their needs:

- The local authority (LA)
- Integrated care boards (previously known as clinical commissioning groups) for an area within the LA
- The chief officer of police for a police area in the LA area

**Parent** refers to birth parents and other adults in a parenting role for example adoptive parents, step parents and foster carers.

**'Staff' or 'members of staff'** refers to all teaching, non-teaching, support, supply, peripatetic, contract staff, governors, volunteers working on behalf of the school.

**Victim** is a widely understood and recognised term, but we understand that not everyone who has been subjected to abuse considers themselves a victim, or would want to be described that way. When managing an incident, we will be prepared to use any term that the child involved feels most comfortable with.

**Alleged perpetrator(s)** and **perpetrator(s)** are widely used and recognised terms. However, we will think carefully about what terminology we use (especially in front of children) as, in some cases, abusive behaviour can be harmful to the perpetrator too. We will decide what's appropriate and which terms to use on a case-by-case basis.

**Keeping Children Safe in Education (2025)** may be abbreviated to 'KCSIE'

**Voice of the child** is central to all safeguarding practice.

- Children will be supported and encouraged to express their wishes and feelings in ways appropriate to their age, understanding and communication needs.
- Staff will listen carefully, record views accurately, and ensure that children know their voices are valued.
- Where decisions are made about a child's safety or welfare, the child's views will always be considered, even if the final decision differs.
- We will take proactive steps to remove barriers to communication (e.g. linked to SEND, EAL, or trauma).

### **Misinformation**

- *Definition:* False or misleading information that is spread without intent to deceive.
- *Safeguarding risk:* Pupils may unknowingly share misinformation online, which can create anxiety, reinforce stereotypes, or escalate risks (e.g. health, safety, prejudice).

- *Example:* False claims during the COVID-19 pandemic that 5G phone masts were causing illness, leading to vandalism of masts and community unrest.

### Disinformation

- *Definition:* False information that is deliberately created and shared to mislead, manipulate, or cause harm.
- *Safeguarding risk:* Children may be targeted with disinformation online (e.g. extremist propaganda, scams, grooming strategies) designed to influence their behaviour or isolate them from trusted adults.
- *Example:* Extremist groups circulating fabricated stories on social media to radicalise young people, or deliberately misleading material about elections to sow division.

### Conspiracy Theories

- *Definition:* Unfounded explanations that suggest events or situations are secretly manipulated by powerful groups, often dismissing evidence and creating distrust in authority.
- *Safeguarding risk:* Conspiracy theories can make children more vulnerable to **radicalisation**, exploitation, and mental health harm by encouraging isolation, mistrust of teachers, parents, government or healthcare professionals.
- *Example:* Online conspiracy theories during the COVID-19 pandemic claiming that vaccines contained microchips, which were used by some groups to discourage children and families from accessing healthcare.

### Safeguarding Implications of Misinformation, Disinformation and Conspiracy Theories (KCSIE 25)

- Children may be exposed to misinformation, disinformation, or conspiracy theories online, through peers, or in family/community contexts.
- These can increase risks of:
  - **Radicalisation and extremism** (e.g. anti-democratic narratives, far-right propaganda).
  - **Health and wellbeing risks** (e.g. vaccine refusal, eating disorder “myths”, dangerous online challenges).
  - **Bullying or prejudice** (e.g. disinformation targeting minority groups).
- Staff will remain vigilant to signs that children are adopting or being influenced by harmful narratives and will respond in line with Prevent duty and safeguarding procedures.

## 4. Equality statement

Some children have an increased risk of abuse, both online and offline, and additional barriers can exist for some children with respect to recognising or disclosing it. We are committed to anti-discriminatory practice and recognise children’s diverse circumstances. We ensure that all children have the same protection, regardless of any barriers they may face.

### We give special consideration to children who:

- Have special educational needs and/or disabilities (SEND) or health conditions (see section 10)
- Are young carers
- May experience discrimination due to their race, ethnicity, religion, gender identification or sexuality
- Have English as an additional language
- Are known to be living in difficult situations – for example, temporary accommodation or where there are issues such as substance abuse or domestic violence
- Are at risk of FGM, sexual exploitation, forced marriage, or radicalisation

- Are asylum seekers
- Are at risk due to either their own or a family member's mental health needs
- Are looked after or previously looked after (see section 11)
- Are missing or absent from education for prolonged periods and/or repeat occasions
- Whose parent/carer has expressed an intention to remove them from school to be home educated

## Child Protection Information (CPI) and Child Exploitation Risk Assessment Framework (CERAF)

The school will utilise CPI forms and the CERAF (Child Exploitation Risk Assessment Framework) in line with Southampton's safeguarding procedures.

- CPI forms will be used to ensure accurate, consistent, and detailed recording of concerns.
- CERAF will be completed where there are concerns about child criminal exploitation (CCE) or child sexual exploitation (CSE), and shared with safeguarding partners as appropriate.

## 4. Roles and responsibilities

Safeguarding and child protection is **everyone's** responsibility. This policy applies to all staff, volunteers and governors in the school and is consistent with the procedures of the 3 safeguarding partners. Our policy and procedures also apply to extended school and off-site activities.

The school plays a crucial role in preventative education. This is in the context of a whole-school approach to preparing pupils for life in modern Britain, and a culture of zero tolerance of sexism, misogyny/misandry, homophobia, biphobia, transphobia and sexual violence/harassment. This will be underpinned by our:

- Behaviour policy
- Pastoral support system
- Planned programme of relationships, sex and health education (RSHE), which is inclusive and delivered regularly, tackling issues such as;
  - Healthy and respectful relationships
  - Boundaries and consent
  - Stereotyping, prejudice and equality
  - Body confidence and self-esteem
  - How to recognise an abusive relationship (including coercive and controlling behaviour)
  - The concepts of, and laws relating to, sexual consent, sexual exploitation, abuse, grooming, coercion, harassment, rape, domestic abuse, so-called honour-based violence such as forced marriage and FGM and how to access support
  - What constitutes sexual harassment and sexual violence and why they're always unacceptable

### 5.1 All staff

---

Staff play a particularly important role because they are in a position to identify concerns in order to provide help for children.

Staff who work **directly** with children are expected to read at least part 1 of Keeping Children Safe in Education 2025 (KCSIE) and annex B of KCSIE (about specific safeguarding issues) and will receive annually updated training on their safeguarding roles and responsibilities

Those staff who **do not work directly** with children are expected to read at least part 1 of Keeping Children Safe in Education 2025 (KCSIE).

**All staff will:**

- Read and understand part 1 of KCSIE 2025, as well as annex B (for those working directly with children), of the Department for Education's statutory safeguarding guidance, Keeping Children Safe in Education, and review this guidance at least annually
- Receive regularly updated safeguarding and child protection training that goes beyond the statutory requirement
- Receive safeguarding updates throughout the year as part of continuous professional development
- Be encouraged to contribute to the development of safeguarding policy and practice • seek advice from the Designated Safeguarding Lead if they are unsure
- Safeguard children's wellbeing and maintain public trust in the teaching profession as part of their professional duties (Teaching Standards, 2012).
- Sign a declaration at the beginning of each academic year to say that they have reviewed the guidance
- Have a responsibility to provide a safe environment, where children can learn
- Receive the necessary training so that they know what to do if a child tells them that he/she is being abused or neglected, including specific issues such as FGM, and how to maintain an appropriate level of confidentiality while liaising with relevant professionals
- Be made aware of and should be clear on the school's policy and procedures with regards to Child-on-child abuse and the important role they have to play in preventing it and responding where they believe a child may be at risk from it
- Be made aware of the early help process and understand their role in it and should be prepared to identify children who may benefit from early help and will discuss early help requirements with the safeguarding lead in the first instance
- Be able to identify indicators of abuse and neglect and exploitation
- Be made aware of systems in the school that support safeguarding and child protection; · will be made aware of safeguarding issues that put children at risk of harm and behaviours associated with these risks
- Ensure that they know what to do if a child makes a disclosure of abuse and never promise confidentiality when a child makes a disclosure
- Reinforce the importance of online safety when communicating with parents and carers. This includes making parents and carers aware of what we ask children to do online (e.g. sites they need to visit or who they'll be interacting with online)
- Provide a safe space for pupils who are LGBTQ+ to speak out and share their concerns

**All staff will be aware of:**

- Our systems which support safeguarding, including this safeguarding policy, the staff code of conduct, the role and identity of the designated safeguarding lead (DSL) and the behaviour policy, the e-safety policy which includes the expectations, applicable roles and responsibilities in relation to filtering and monitoring, and the safeguarding response to children who go missing from education

- The early help assessment process (sometimes known as the common assessment framework) and their role in it, including identifying emerging problems, liaising with the DSL, and sharing information with other professionals to support early identification and assessment
- The process for making referrals to local authority children's social care and for statutory assessments that may follow a referral, including the role they might be expected to play
- What to do if they identify a safeguarding issue or a child tells them they are being abused or neglected, including specific issues such as FGM, and how to maintain an appropriate level of confidentiality while liaising with relevant professionals
- The signs of different types of abuse, neglect and exploitation, as well as specific safeguarding issues, such as child-on-child abuse, child sexual exploitation (CSE), child criminal exploitation (CCE), indicators of being at risk from or involved with serious violent crime, FGM, radicalisation and serious violence (including that linked to county lines)
- The importance of reassuring victims that they are being taken seriously and that they will be supported and kept safe
- The fact that children can be at risk of harm inside and outside of their home, at school and online
- The fact that children who are (or who are perceived to be) lesbian, gay, bi or trans (LGBTQ+) can be targeted by other children what to look for to identify children who need help or protection
- Although there are extensive mechanisms in place to support staff understanding in relation to safeguarding and child protection, there is an expectation that if staff are unclear on any aspects of school safeguarding policy or practice, they speak to the Designated Safeguarding Lead without delay, so that additional training can be put in place.

Section 16 and appendix 4 of this policy outline in more detail how staff are supported to do this.

## 5.2 The designated safeguarding lead (DSL)

---

The DSL is a member of the senior leadership team. Our DSL is **Faye Bauck, Head of School**. The DSL takes lead responsibility for child protection and wider safeguarding in the school. This includes online safety and understanding our filtering and monitoring processes on school devices and school networks to keep pupils safe online.

Whilst the activities of the designated safeguarding lead can be delegated to appropriately trained deputies, the ultimate **lead responsibility** for child protection, as set out above, remains with the designated safeguarding lead; this **lead responsibility** should not be delegated.

During term time, the DSL will be available during school hours for staff to discuss any safeguarding concerns.

The DSL can be contacted out of school hours by email at [dsl@masonmoorprimary.co.uk](mailto:dsl@masonmoorprimary.co.uk)

When the DSL is absent, the Deputy Designated Safeguarding Lead (DDSL) – Davina Ashbolt-Smith, Deputy Head will act as cover. Any deputies will be trained to the same level as the DSL.

If the DSL and DDSL(s) are not available, members from the school's wider safeguarding team will act as cover (for example, during out-of-hours/out-of-term activities).

All members of the wider safeguarding team are in receipt of Level 3 safeguarding training, the same training that is required for DSLs/DDSs.

### **The DSL:**

will be given the time, funding, training, resources and support to:

- undertake training to equip them with the skills to carry out the role
- provide advice and support to other staff on child welfare and child protection matters to ensure that all staff can carry out their safeguarding duty
- advise on the response to safeguarding concerns
- take part in strategy discussions and inter-agency meetings and/or support other staff to do so be available during school or college hours for staff to discuss any safeguarding concerns. In the event that they are not available, a deputy will be made available and/or other suitable arrangements will be put in place
- identify if children may benefit from early help
- contribute to the assessment of children
- liaise with the Local Authority and work with other agencies in line with 'Working Together to Safeguard Children';
- refer suspected cases, as appropriate, to the relevant body (local authority children's social care, Channel programme, Disclosure and Barring Service, and/or police), and support staff who make such referrals directly
- Support the school with regards to their responsibilities under the Prevent duty and
- provide advice and support on protecting children from radicalisation
- Refer cases to the police where a crime may have been committed
- have a good understanding of harmful sexual behaviour
- Have a good understanding of the filtering and monitoring systems and processes in place at our school
- Ensure all staff that do not work directly with children have read either Part 1 or Annex A (as appropriate) of Keeping Children Safe in Education (2025);
- Update their knowledge and skills regularly and keep up with any developments relevant to their role;
- Provide staff in school with the knowledge, skills and support required to safeguard children;
- Take responsibility for the accurate and timely recording of safeguarding and child protection concerns and take overall responsibility for safeguarding and child protection files;
- Take responsibility for the transfer of safeguarding files when a child leaves the school; · Attend or ensure an appropriate representative attends multi-agency safeguarding or child protection meetings
- Work closely with other relevant education professionals (e.g. SENCO, Virtual School Head) to ensure children with additional vulnerabilities are safeguarded
- Help to promote educational outcomes of children who have experienced or are experiencing safeguarding or child protection issues by sharing relevant information with teachers and the school leadership team
- Promote a 'culture of safeguarding', in which every member of the school community acts in the best interests of the child
- Regularly meet with the safeguarding link governor and/or Chair of governors to review safeguarding at the school

### **The DSL will also:**

- Keep the headteacher informed of any issues

- Liaise with local authority case managers and designated officers for child protection concerns as appropriate
- Discuss the local response to sexual violence and sexual harassment with police and local authority children's social care colleagues to prepare the school's policies
- Be confident that they know what local specialist support is available to support all children involved (including victims and alleged perpetrators) in sexual violence and sexual harassment, and be confident as to how to access this support
- Be aware that children must have an 'appropriate adult' to support and help them in the case of a police investigation or search
- The full responsibilities of the DSL, DDSL and the wider safeguarding team are set out in their job description and are also set out in Annex C, KCSIE (2025).

### Ensuring the Voice of the Child:

Mason Moor is committed to ensuring that the voice of the child is central to all safeguarding practice.

- Children will be encouraged and supported to express their wishes, feelings and views in ways appropriate to their age and understanding.
- Staff will actively listen to children, value their contributions, and ensure their voice informs decisions and actions taken on their behalf.
- We recognise that some children face barriers to communication (due to SEND, language, trauma, or other factors) and will use appropriate strategies to ensure their voice is heard.

### 5.3 The governing body

The Governing Board has the strategic leadership responsibility for the school's safeguarding arrangements. The responsibility for implementation and monitoring of this has been delegated to the local governing body. The board will appoint a Governor Safeguarding Lead to monitor the effectiveness of this policy in conjunction with the full governing board. This is always a different person from the DSL. **The Governor Safeguarding Lead is Amanda Humby.**

The Board will ensure that there are mechanisms in place to assist staff in understanding and discharging their statutory safeguarding roles and responsibilities. The governing body will ensure that the school is working with local safeguarding partners and that the school contributes to multi-agency working, adhering to Working Together to Safeguard Children (2023 – updated February 2024). All governors will read the KCSIE 2025 and a record will be kept of this.

#### The governing board will:

- Facilitate a whole-school approach to safeguarding, ensuring that safeguarding and child protection are at the forefront of, and underpin, all relevant aspects of process and policy development
- Evaluate and approve this policy at each review, ensuring it complies with the law, and hold the headteacher to account for its implementation
- Be aware of its obligations under the Human Rights Act 1998, the Equality Act 2010 (including the Public Sector Equality Duty), and our school's local multi-agency safeguarding arrangements.
- Appoint a link governor to monitor the effectiveness of this policy in conjunction with the full governing board.

- Ensure all staff undergo safeguarding and child protection training, including online safety, and that such training is regularly updated and is in line with advice from the safeguarding partners
- Ensure that the school has appropriate filtering and monitoring systems in place, and review their effectiveness. This includes:
  - Making sure that the leadership team and staff are aware of the provisions in place,
  - and that they understand their expectations, roles and responsibilities around filtering and monitoring as part of safeguarding training. For more information, please refer to the Appendix to Safeguarding Policy - Schools Web-filtering Process
  - Reviewing the DfE's filtering and monitoring standards, and discussing with IT staff and service providers what needs to be done to support the school in meeting these standards

#### **Make sure:**

- The DSL has the appropriate status and authority to carry out their job, including additional time, funding, training, resources and support
- Online safety is a running and interrelated theme within the whole-school approach to safeguarding and related policies
- The DSL has lead authority for safeguarding, including online safety and understanding the filtering and monitoring systems and processes in place
- The school has procedures to manage any safeguarding concerns (no matter how small) or allegations that do not meet the harm threshold (low-level concerns) about staff members (including supply staff, volunteers and contractors). Appendix 3 of this policy covers this procedure
- That this policy reflects that children with SEND, or certain medical or physical health conditions, can face additional barriers to any abuse or neglect being recognised

#### **Where another body is providing services or activities (regardless of whether or not the children who attend these services/activities are children on the school roll):**

- Seek assurance that the other body has appropriate safeguarding and child protection policies/procedures in place, and inspect them if needed
- Make sure there are arrangements for the body to liaise with the school about safeguarding arrangements, where appropriate
- Make sure that safeguarding requirements are a condition of using the school premises, and that any agreement to use the premises would be terminated if the other body fails to comply
- The chair of governors will act as the 'case manager' in the event that an allegation of abuse is made against the headteacher, where appropriate (see appendix 3).
- All governors will read Keeping Children Safe in Education in its entirety.
- Section 17.3 of this policy has information on how governors are supported to fulfil their role.

#### **5.4 The headteacher**

---

The headteacher is responsible for the implementation of this policy, including:

- Ensuring that staff (including temporary staff) and volunteers:
  - Are informed of our systems which support safeguarding, including this policy, as part of their induction
  - Understand and follow the procedures included in this policy, particularly those concerning referrals of cases of suspected abuse, neglect and exploitation
- Communicating this policy to parents/carers when their child joins the school and via the school website

- Ensuring that the DSL has appropriate time, funding, training and resources, and that there is always adequate cover if the DSL is absent.
- Ensure that this policy is reviewed annually and ratified by the Governing Board
- Ensure that this policy and associated procedures are adhered to by all staff and take action as necessary if not;
- Ensure that staff (including temporary staff) and volunteers are informed of our systems that support safeguarding, including this policy, as part of their induction.
- Ensure that all staff are made aware of the named PAB member for safeguarding and the Designated Safeguarding Lead;
- Ensure that the role of 'Designated Safeguarding Lead' is explicit in the role-holder's job description, that they have appropriate time, funding, training and resources and that there is always adequate cover if the DSL is absent;
- Decide whether to have one or more deputy safeguarding leads and ensure they are trained to the same standard as the Designated Safeguarding Lead;
- Organise appropriate cover for the role of Designated Safeguarding Lead for any out of hours/out of term activities;
- Acting as the 'case manager' in the event of an allegation of abuse made against another member of staff or volunteer, where appropriate (see appendix 3)
- Making decisions regarding all low-level concerns, though they may wish to collaborate with the DSL on this
- Appoint a 'Designated Teacher for Looked After and Previously Looked After Children' to promote the educational achievement of children looked after and previously looked after;
- Appoint a lead for online safety (usually the DSL – see Annex C KCSIE 2025);
- Ensure that all recruitment follows the safer recruitment guidance (see Part 3 of KCSIE 2025) and a single, central record is maintained with details of all members of staff who are in contact with children. For more information on the Single central record, please refer to paragraph 274 - 278 from KCSIE 2025.
- Respond to allegations of abuse against all other members of staff and act as the 'case manager' in the event of an allegation of abuse made against another member of staff or volunteer, where appropriate;
- Refer cases where a person is dismissed or left due to risk/harm to a child to the Disclosure and Barring Service as required;
- Safeguard children's wellbeing and maintain public trust in the teaching profession as part of their professional duties (Teaching Standards, 2012);
- Ensure that children's social care (from the host local authority or placing authority) have access to the school to conduct, or to consider whether to conduct a section 47 or section 17 assessment, as per Keeping Children Safe in Education 2025;
- Ensure that the school works with social care, the police, health services and other services to; promote the welfare of children; provide a co-ordinated offer of early help when need is identified; contribute to inter-agency plans for children subject to children protection plans and to protect children from harm;
- Ensuring the relevant staffing ratios are met, where applicable
- Making sure each child in the Early Years Foundation Stage is assigned a key person •  
Overseeing the safe use of technology, mobile phones and cameras in the setting

## 5.5 Virtual school heads

---

Virtual school heads have a non-statutory responsibility for the strategic oversight of the educational attendance, attainment, and progress of pupils with a social worker.

They should also identify and engage with key professionals, e.g. DSLs, special educational needs co-ordinators (SENCOs), social workers, mental health leads and others.

## 6. Confidentiality

### 6.1 Sharing information with parents

---

Information sharing is vital in identifying and tackling all forms of abuse, neglect and exploitation, and in promoting children's welfare, including in relation to their educational outcomes.

The school will ensure the Safeguarding and Child Protection Policy is available publicly via the school website.

Where appropriate, we will discuss any concerns about a child with the child's parents. The Designated Safeguarding Lead (DSL) will normally do this in the event of a concern, suspicion or disclosure. Other staff will only talk to parents about any such concerns following consultation with the DSL.

If we believe that notifying the parents would increase the risk to the child, we will discuss this with the local authority children's social care team before doing so (see Section 6.2 for more details). In the case of allegations of abuse made against other children, we will normally notify the parents of all the children involved.

- The Designated Safeguarding Lead (DSL) will ensure that all child protection records are **transferred securely and promptly** when a child moves to another setting.
- Transfer will be completed within **5 school days**, wherever possible, and confirmation of receipt will be obtained from the receiving DSL.
- Safeguarding information will also be shared with relevant professionals (such as health, social care, police or youth justice services) **without consent if a child may be at risk of harm**.
- All information sharing will be recorded, including the reason, method, and confirmation of receipt.

### 6.2 Consent

---

The Data Protection Act 2018 introduced 'safeguarding' as a reason to be able to process sensitive, personal information, even without consent (DPA, Part 2, 18; Schedule 8, 4). All relevant information can be shared without consent if to gain consent would place a child at risk. Fears about sharing information **must not be allowed** to stand in the way of promoting the welfare and protecting the safety of children. All professionals responsible for children should not assume that someone else will pass on information that they think may be critical to keeping a child safe.

It is important that governing bodies and proprietors are aware that among other obligations, the Data Protection Act 2018, and the UK General Data Protection Regulation (UK GDPR) place duties on organisations and individuals to process personal information fairly and lawfully and to keep the information they hold safe and secure. See ICO guidance 'For Organisations' which includes information about your obligations and how to comply, including protecting personal information, and providing access to official information.

As with all data sharing, appropriate organisational and technical safeguards are in place and will be adhered to when processing safeguarding and child protection information. When considering whether, or not, to share safeguarding information (especially with other agencies), The school will record who they are sharing that information with and for what reason. If we have taken a decision not to seek consent from the data subject and/or parent that should also be recorded within the safeguarding file.

All staff in school will be made aware of their duties in relation to Data Protection and safeguarding, particularly in respect of confidentiality. This includes the following:

- Timely information sharing is essential to effective safeguarding
- Fears about sharing information must not be allowed to stand in the way of the need to promote the welfare, and protect the safety, of children
- The Data Protection Act (DPA) 2018 and UK GDPR do not prevent, or limit, the sharing of information for the purposes of keeping children safe
- If staff need to share 'special category personal data', the DPA 2018 contains 'safeguarding of children and individuals at risk' as a processing condition that allows practitioners to share information without consent if: it is not possible to gain consent; it cannot be reasonably expected that a practitioner gains consent; or if to gain consent would place a child at risk
- Staff should never promise a child that they will not tell anyone about a report of abuse, as this may not be in the child's best interests

If a victim asks the school not to tell anyone about the sexual violence or sexual harassment:

- There's no definitive answer, because even if a victim doesn't consent to sharing information, staff may still lawfully share it if there's another legal basis under the UK

### **GDPR that applies**

- The DSL will have to balance the victim's wishes against their duty to protect the victim and other children

The DSL should consider that:

- Parents or carers should normally be informed (unless this would put the victim at greater risk)
- The basic safeguarding principle is: if a child is at risk of harm, is in immediate danger, or has been harmed, a referral should be made to local authority children's social care
- Rape, assault by penetration and sexual assault are crimes. Where a report of rape, assault by penetration or sexual assault is made, this should be referred to the police. While the age of criminal responsibility is 10, if the alleged perpetrator is under 10, the starting principle of referring to the police remains

### **Regarding anonymity, all staff will:**

- Be aware of anonymity, witness support and the criminal process in general where an allegation of sexual violence or sexual harassment is progressing through the criminal justice system
- Do all they reasonably can to protect the anonymity of any children involved in any report of sexual violence or sexual harassment, for example, carefully considering which staff should know about the report, and any support for children involved
- Consider the potential impact of social media in facilitating the spreading of rumours and exposing victims' identities

- The government's information sharing advice for safeguarding practitioners includes **7 'golden rules' for sharing information**, and will support staff who have to make decisions about sharing information
- If staff are in any doubt about sharing information, they should speak to the DSL (or deputy)
- Confidentiality is also addressed in this policy with respect to record-keeping in section 15, and allegations of abuse against staff in appendix 3

### Sharing and Transfer of Safeguarding Information

- The DSL is responsible for ensuring that all safeguarding and child protection information is transferred securely when a child moves to another school or setting.
- This transfer will take place in line with *KCSIE (2025)* and local procedures, ensuring that the receiving school's DSL is aware of any ongoing concerns.
- Information will also be shared with other professionals working with the child or family (e.g. social workers, health practitioners, youth justice workers) where it is necessary to safeguard and promote the welfare of the child.
- All transfers will be recorded, including confirmation of receipt.

## 7. Recognising abuse and taking action

Staff, volunteers and governors must follow the procedures set out below in the event of a safeguarding issue.

### 7.1 Taking action

If a member of staff, parent or member of the public is concerned about a pupil's welfare, they should report it to the DSL as soon as possible. On occasions when the DSL is not available, it should be reported to the deputy safeguarding lead/s (DDSL/s) without delay. If in exceptional circumstances, the DSL and the DDSL is not available, this should not delay appropriate action being taken. Staff should consider speaking to a member of the wider safeguarding team, members of the senior leadership team and/or take advice from local children's social care.

Although any member of staff can make a referral to children's social care, where possible there should be a conversation with the DSL. All staff must follow the procedures set out below in the event of a safeguarding issue.

All staff will be alert to indicators of abuse (including child on child abuse) and will report any of the following to the Designated Safeguarding Lead immediately;

- any concern or suspicion that a child has sustained an injury outside what is reasonably attributable to normal play
- any concerning behaviours exhibited by children that may indicate that they have been harmed or are at risk of harm, including unusual changes in mood or behaviour, concerning use of language and/or concerning drawings or stories
- any significant changes in attendance or punctuality
- any significant changes in a child's presentation
- any indicators that a child may be experiencing child on child abuse
- any concerns relating to people who may pose a risk of harm to a child
- any disclosures of abuse that children have made.

More information about our approach to Child-on-Child abuse (including sexual violence and sexual harassment) can be found in Appendix 5

Referral procedures can be found in section 7.7

### 7.11 Attendance and Safeguarding

---

In line with *Working Together to Improve School Attendance (DfE 2024)*, safeguarding and attendance are intrinsically linked. Poor attendance and persistent absence may be indicators of abuse, neglect, exploitation, or other safeguarding concerns.

- The DSL and Attendance Lead will work together to monitor absence patterns, lateness, and pupils missing from education.
- Unexplained or persistent absence will be treated as a **potential safeguarding concern**.
- Where a child is missing from education or their attendance causes concern, safeguarding checks will be carried out, and referrals made to the Local Authority where appropriate.
- Children missing education will be reported in line with statutory requirements.

### 7.2 If a child is suffering or likely to suffer harm, or in immediate danger

---

Make a referral to children's social care and/or the police **immediately** if you believe a child is suffering or likely to suffer from harm, or is in immediate danger. **Anyone can make a referral.**

**You must tell the DSL as soon as possible if you make a referral directly where they will be able to support you further.**

On occasions, if the designated safeguarding lead is not available, it should be reported without delay to the deputy safeguarding lead, a member of the safeguarding team or a member of the senior leadership team for further support.

If **possible**, there should be a conversation with the Designated Safeguarding Lead prior to a referral, but a referral must be made if a child may be suffering or at risk of suffering harm. **Anyone can make a referral to children's social care.** If anyone other than the DSL makes a referral to children's social care or to the police, they should inform the DSL as soon as possible.

To report an incident of child abuse to your local council please use the following link  
<https://www.southampton.gov.uk/children-families/childrens-social-care/report-a-concern-about-a-child/>

Tell the DSL (see section 5.2) as soon as possible if you make a referral directly.

### 7.3 If a child discloses that they are suffering or at risk of suffering abuse

---

If a child discloses a safeguarding issue to you, the staff member should:

- Listen to and believe them. Allow them time to talk freely and do not ask leading questions. Only ask questions when necessary and to clarify
- Stay calm and do not show that you are shocked or upset
- Reassure the child and tell the child they have done the right thing in telling you and that it is not their fault. Do not tell them they should have told you sooner
- Explain what will happen next and that you will have to pass this information on.
- Do not promise to keep it a secret as this may not be in the best interests of the child
- Make notes as soon as practicably possible that reflect the conversation had as soon as possible in the child's own words. Stick to the facts, and do not put your own judgement on it

- Pass the information of the concern on to the DSL using the school's online safeguarding platform CPOMS **immediately** and inform the DSL of the concern, or the DDSL in their absence. Alternatively, if appropriate, make a referral to children's social care and/or the police directly (see 7.2), and tell the DSL as soon as possible that you have done so. Aside from these people, do not disclose the information to anyone else unless told to do so by a relevant authority involved in the safeguarding process

Bear in mind that some children may:

- Not feel ready, or know how to tell someone that they are being abused, exploited or neglected
- Not recognise their experiences as harmful
- Feel embarrassed, humiliated or threatened. This could be due to their vulnerability, disability, sexual orientation and/or language barriers

None of this should stop you from having a 'professional curiosity' and speaking to the DSL if you have concerns about a child.

All staff will reassure victims that they are being taken seriously and that they will be supported and kept safe. A victim should never be given the impression that they are creating a problem by reporting abuse, sexual violence or sexual harassment, nor should a victim ever be made to feel ashamed for making a report.

#### **7.4 If you have concerns about a child (as opposed to believing a child is suffering or likely to suffer from harm, or is in immediate danger)**

Figure 1 below (section 7.10), illustrates the procedure to follow if you have any concerns about a child's welfare. Where possible, speak to the DSL first to agree a course of action.

The DSL will decide on the most appropriate course of action and whether the concerns should be referred to children's social care, using the Southampton Thresholds Guidance. If it is decided to make a referral to children's social care the parent will be informed, unless to do so would place the child at further risk or undermine the collection of evidence.

All concerns, discussions and decisions will be recorded on the school's online safeguarding platform: CPOMS.

The DSL will provide guidance on the appropriate action. Options will include;

- Managing any support for the child internally via the school's own pastoral support processes
- Seeking advice from the local early help co-ordinator
- An Early help assessment
- A referral for statutory services where the child is or might be in need or suffering or likely to suffer significant harm

If in exceptional circumstances the DSL is not available, this should not delay appropriate action being taken. Speak to the DDSL, a member of the safeguarding team or a member of the senior leadership team and/or take advice from local authority children's social care. You can also seek advice at any time from the NSPCC helpline on 0808 800 5000. Share details of any actions you take with the DSL as soon as practically possible.

Make a referral to local authority children's social care directly, if appropriate (see 7.7). Share any action taken with the DSL as soon as possible.

## **7.5 If you discover that FGM has taken place, or a pupil is at risk of FGM**

---

Keeping Children Safe in Education explains that FGM comprises "all procedures involving partial or total removal of the external female genitalia, or other injury to the female genital organs".

FGM is illegal in the UK and a form of child abuse with long-lasting, harmful consequences. It is also known as 'female genital cutting', 'circumcision' or 'initiation'.

Possible indicators that a pupil has already been subjected to FGM, and factors that suggest a pupil may be at risk, are set out in appendix 4 of this policy.

**Any teacher** who either:

- Is informed by a girl under 18 that an act of FGM has been carried out on her; or
- Observes physical signs which appear to show that an act of FGM has been carried out on a girl under 18 and they have no reason to believe that the act was necessary for the girl's physical or mental health or for purposes connected with labour or birth must immediately report this to the police, personally. This is a mandatory statutory duty, and teachers will face disciplinary sanctions for failing to meet it.

Unless they have been specifically told not to disclose, they should also discuss the case with the DSL and involve children's social care as appropriate.

**Any other member of staff** who discovers that an act of FGM appears to have been carried out on a **pupil under 18** must speak to the DSL and follow our local safeguarding procedures.

The duty for teachers mentioned above does not apply in cases where a pupil is *at risk* of FGM or FGM is suspected but is not known to have been carried out. Staff should not examine pupils.

**Any member of staff** who suspects a pupil is *at risk* of FGM or suspects that FGM has been carried out should speak to the DSL and follow our local safeguarding procedures.

## **7.6 Early help assessment**

---

All staff should be prepared to identify children who may benefit from Early help. Early help means providing support as soon as a problem emerges at any point in a child's life.

If an early help assessment is appropriate, the DSL will generally lead on liaising with other agencies and setting up an inter-agency assessment as appropriate. Staff may be required to support other agencies and professionals in an early help assessment, in some cases acting as the lead practitioner.

We will discuss and agree, with statutory safeguarding partners, levels for the different types of assessment, as part of local arrangements.

The DSL will keep the case under constant review and the school will consider a referral to local authority children's social care if the situation does not seem to be improving. Timelines of interventions will be monitored and reviewed.

All staff will be made aware of the early help process, and understand their role in identifying emerging problems, sharing information with other professionals to support early identification and assessment of a child's needs. It is important for children to receive the right help at the right time to address risks and prevent issues escalating. This also includes staff monitoring the situation and feeding back to the Designated Safeguarding Lead any ongoing/escalating concerns so that consideration can be given to a referral to children's social care if the child's situation does not appear to be improving.

We recognise that any child can be the victim of abuse and may benefit from early help. However, we will be particularly vigilant to potential need for early help if a child;

- is disabled or has certain health conditions and has specific additional needs
- has special educational needs (whether or not they have a statutory Education, Health and Care Plan)
- has a mental health need
- is a young carer
- is showing signs of being drawn in to antisocial or criminal behaviour, including gang involvement and association with organised crime groups or county lines
- is frequently missing/goes missing from care, home or education
- has experienced multiple suspensions, is at risk of being permanently excluded from schools, colleges and in Alternative Provision or a Pupil Referral Unit.
- is at risk of modern slavery, trafficking, sexual or criminal exploitation
- is at risk of being radicalised or exploited
- has a parent or carer in custody, or is affected by parental offending
- is in a family circumstance presenting challenges for the child, such as drug and alcohol misuse, adult mental health issues and domestic abuse
- is misusing drugs or alcohol themselves
- has returned home to their family from care
- is at risk of so-called 'honour'-based abuse such as Female Genital Mutilation or Forced Marriage;
- is a privately fostered child

For further information please refer to Working Together to Safeguard Children (2023 – updated February 2024)

## **7.7 Referral**

---

If it is appropriate to refer the case to local authority children's social care or the police, the DSL will make the referral or support you to do so. If you make a referral directly (see section 7.2), you must tell the DSL as soon as possible.

Children's social care assessments should consider where children are being harmed in contexts outside the home, so the school will provide as much information as possible as part of the referral process. This will allow any assessment to consider all the available evidence and enable a contextual approach to address such harm.

The local authority will make a decision within 1 working day of a referral about what course of action to take and will let the person who made the referral know the outcome. The DSL or person who made the referral must follow up with the local authority if this information is not made

available, and ensure outcomes are properly recorded in a timely manner. Evidence of follow up should be recorded on CPOMS by the DSL/DDSL.

If the child's situation does not seem to be improving after the referral, the DSL or person who made the referral must follow local escalation procedures to ensure their concerns have been addressed and that the child's situation improves.

The DSL should refer all cases of suspected abuse or neglect to Children's Social Care, police (cases where a crime may have been committed) and to the Channel programme where there is a radicalisation concern. Safeguarding Referrals must be made in one of the following ways:

- By telephone contact Children's Social Care: **023 8083 2300**
- By using the online concern form - <https://www.southampton.gov.uk/children-families/childrens-social-care/report-a-concern-about-a-child/>
- In an emergency outside of office hours, emailing if you cannot get hold at: [childrenresourceservice@southampton.gov.uk](mailto:childrenresourceservice@southampton.gov.uk)
- If a child is in immediate danger at any time, left alone or missing, you should contact the police directly and/or an ambulance using 999

If the child's situation does not seem to be improving after the referral, the DSL or person who made the referral must follow local escalation procedures to ensure their concerns have been addressed and that the child's situation improves.

If the DSL, or the referrer is not satisfied with the suggested outcome following the referral to Children's Social Care, the DSL should escalate this to the Duty Manager or to a higher level if appropriate without delay. Details and information regarding the escalation and challenge of the decision should be logged in the chronology within the school's online safeguarding platform, Safeguard Software (SGSW) or My Concern.

## **7.8 If you have concerns about extremism**

---

All schools are subject to a duty under section 26 of the Counter-Terrorism and Security Act 2015 in the exercise of their functions to have "due regard" to the need to prevent people from being drawn into terrorism. In the event that concerns are raised relating to radicalisation and extremism, the DSL should be informed immediately.

If a child is not suffering or likely to suffer from harm, or in immediate danger, where possible speak to the DSL first to agree a course of action.

If in exceptional circumstances the DSL is not available, this should not delay appropriate action being taken. Speak to the DDSL, a member of the safeguarding team or a member of the senior leadership team and/or seek advice from local authority children's social care. Make a referral to local authority children's social care directly, if appropriate (see 'Referral' above). Inform the DSL or deputy as soon as practically possible after the referral.

Where there is a concern, the DSL will consider the level of risk and decide which agency to make a referral to. This could include Channel, the government's programme for identifying and supporting individuals at risk of being drawn into terrorism, or the local authority children's social care team.

- The DfE also has a dedicated telephone helpline, 020 7340 7264, which school staff and governors can call to raise concerns about extremism with respect to a pupil.
- You can also email [counter.extremism@education.gov.uk](mailto:counter.extremism@education.gov.uk). Note that this is not for use in emergency situations.
- In an emergency, call 999 or the confidential anti-terrorist hotline on 0800 789 321 if you:
  - Think someone is in immediate danger
  - Think someone may be planning to travel to join an extremist group
  - See or hear something that may be terrorist-related

## 7.9 If you have a concern about mental health

---

Mental health problems can, in some cases, be an indicator that a child has suffered or is at risk of suffering abuse, neglect or exploitation.

Staff will be alert to behavioural signs that suggest a child may be experiencing a mental health problem or be at risk of developing one. Where children have suffered abuse, neglect and exploitation, or other potentially traumatic adverse childhood experiences, this can have a lasting impact throughout childhood, adolescence and into adulthood. It is key that staff are aware of how these children's experiences, can impact on their mental health, behaviour and education.

If you have a mental health concern about a child that is also a safeguarding concern, take immediate action by following the steps in section 7.4.

If you have a mental health concern that is **not** also a safeguarding concern, speak to the DSL to agree a course of action, and follow the steps as set out within the school's Mental health and well-being policy which can be found on the school's website.

Only appropriately trained professionals should attempt to make a diagnosis of a mental health concern. However, this school will provide information and signposting services to children and parents and assist with the teaching of emotional health and wellbeing to children as part of our broad and balanced curriculum offer.

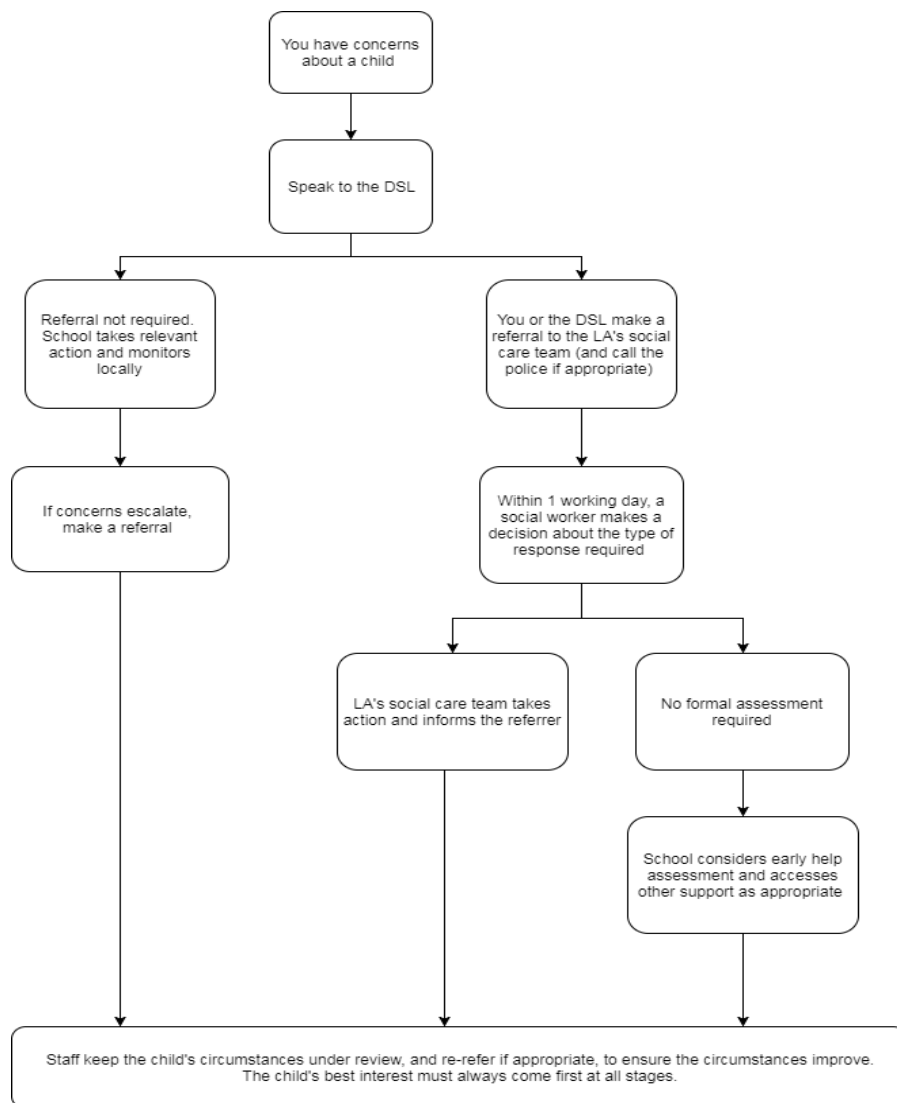
For further information about mental health and how to support children with mental health problems, please refer to the school's mental health and well-being policy which is available on the school's website.

For more information on mental health, please visit mental health and behaviour in schools for more information.

## 7.10 - Figure 1: procedure if you have concerns about a child's welfare (as opposed to believing a child is suffering or likely to suffer from harm, or in immediate danger)

---

(Note – if the DSL is unavailable, this should not delay action. Speak to the DDSL, a member of the safeguarding team and/or a member of the senior leadership team.



### 7.11 Concerns about a staff member, supply teacher, volunteer or contractor

If you have concerns about a member of staff (including a supply teacher, volunteer or contractor), or an allegation is made about a member of staff (including a supply teacher, volunteer or contractor) posing a risk of harm to children, speak to the headteacher as soon as possible.

- If the concerns/allegations are about the headteacher, it must be reported to the appropriate Executive Headteacher who will manage the case. The Executive Headteacher will then follow the procedures set out in appendix 3, if appropriate.
- Allegations made against the Executive Headteacher must be reported to Amanda Humby – Chair of Governors
- Allegations against the chair of the board must be directed to the Department for Education.

Where you believe there is a conflict of interest in reporting a concern or allegation about a member of staff (including a supply teacher, volunteer or contractor) to the headteacher, report it directly to the local authority designated officer (LADO).

If you receive an allegation relating to an incident where an individual or organisation was using the school premises for running an activity for children, follow our school safeguarding policies and procedures, informing the LADO, as you would with any safeguarding allegation.

Where appropriate, the school will inform Ofsted of the allegation and actions taken, within the necessary timescale.

### **7.12 Allegations of abuse made against other pupils (Child-on-Child abuse)**

---

We recognise that children are capable of abusing their peers. Abuse will never be tolerated or passed off as “banter”, “just having a laugh” or “part of growing up”, as this can lead to a culture of unacceptable behaviours and an unsafe environment for pupils.

The school takes all reports and concerns about child-on-child abuse, including child-on-child sexual violence and harassment very seriously. This includes and reports or concerns that have occurred outside of the school premises and online.

We also recognise the gendered nature of child-on-child abuse. However, all child-on-child abuse is unacceptable and will be taken seriously.

Most cases of pupils hurting other pupils will be dealt with under our school’s behaviour policy, but this safeguarding policy will apply to any allegations that raise safeguarding concerns. This might include where the alleged behaviour:

- Is serious, and potentially a criminal offence
- Could put pupils in the school at risk
- Is violent
- Involves pupils being forced to use drugs or alcohol
- Involves sexual exploitation, sexual abuse or sexual harassment, such as indecent exposure, sexual assault, upskirting or sexually inappropriate pictures or videos (including the sharing of nudes and semi-nudes)

### **Procedures for dealing with allegations of child-on-child abuse**

---

If a pupil makes an allegation of abuse against another pupil:

- You must record the allegation and tell the DSL, but do not investigate it
- The DSL will contact the local authority children’s social care team and follow its advice, as well as the police if the allegation involves a potential criminal offence
- The DSL will put a risk assessment and support plan into place for all children involved (including the victim(s), the child(ren) against whom the allegation has been made and any others affected) with a named person they can talk to if needed. This will include considering school transport as a potentially vulnerable place for a victim or alleged perpetrator(s)
- The DSL will contact the children and adolescent mental health services (CAMHS), if appropriate
- If the incident is a criminal offence and there are delays in the criminal process, the DSL will work closely with the police (and other agencies as required) while protecting children and/or taking any disciplinary measures against the alleged perpetrator. We will ask the police if we have any questions about the investigation.

### **Creating a supportive environment in school and minimising the risk of child-on-child abuse**

We recognise the importance of taking proactive action to minimise the risk of child-on-child abuse, and of creating a supportive environment where victims feel confident in reporting incidents.

### **To achieve this, we will:**

- Challenge any form of derogatory or sexualised language or inappropriate behaviour between peers, including requesting or sending sexual images
- Be vigilant to issues that particularly affect different genders – for example, sexualised or aggressive touching or grabbing towards female pupils, and initiation or hazing type violence with respect to boys
- Ensure our curriculum helps to educate pupils about appropriate behaviour and consent
- Ensure pupils are able to easily and confidently report abuse using our reporting systems (as described in section 7.14 below)
- Ensure staff reassure victims that they are being taken seriously
- Be alert to reports of sexual violence and/or harassment that may point to environmental or systemic problems that could be addressed by updating policies, processes and the curriculum, or could reflect wider issues in the local area that should be shared with safeguarding partners
- Support children who have witnessed sexual violence, especially rape or assault by penetration. We will do all we can to make sure the victim, alleged perpetrator(s) and any witnesses are not bullied or harassed
- Consider intra-familial harms and any necessary support for siblings following a report of sexual violence and/or harassment

### **Ensure staff are trained to understand:**

- How to recognise the indicators and signs of child-on-child abuse, and know how to identify it and respond to reports
- That even if there are no reports of child-on-child abuse in school, it does not mean it is not happening – staff should maintain an attitude of **“it could happen here”**.
- That if they have any concerns about a child’s welfare, they should act on them immediately rather than wait to be told, and that victims may not always make a direct report. For example:
  - Children can show signs or act in ways they hope adults will notice and react to
  - A friend may make a report
  - A member of staff may overhear a conversation
  - A child’s behaviour might indicate that something is wrong
- That certain children may face additional barriers to telling someone because of their vulnerability, disability, gender, ethnicity and/or sexual orientation
- That a pupil harming a peer could be a sign that the child is being abused themselves, and that this would fall under the scope of this policy
- The important role they have to play in preventing child-on-child abuse and responding where they believe a child may be at risk from it
- That they should speak to the DSL if they have any concerns
- That social media is likely to play a role in the fall-out from any incident or alleged incident, including for potential contact between the victim, alleged perpetrator(s) and friends from either side

The DSL will take the lead role in any disciplining of the alleged perpetrator(s). We will provide support at the same time as taking any disciplinary action.

Disciplinary action can be taken while other investigations are going on, e.g. by the police. The fact that another body is investigating or has investigated an incident doesn’t (in itself) prevent our school from coming to its own conclusion about what happened and imposing a penalty accordingly. We will consider these matters on a case-by-case basis, taking into account whether:

- Taking action would prejudice an investigation and/or subsequent prosecution – we will liaise with the police and/or local authority children’s social care to determine this
- There are circumstances that make it unreasonable or irrational for us to reach our own view about what happened while an independent investigation is ongoing

### 7.13 Sharing of nudes and semi-nudes (‘sexting’)

---

Based on guidance from the UK Council for Internet Safety, staff, DSLs and senior leaders should be aware of the following;

#### Your responsibilities when responding to an incident

If you are made aware of an incident involving the consensual or non-consensual sharing of nude or semi-nude images/videos (also known as ‘sexting’ or ‘youth produced sexual imagery’), you must report it to the DSL immediately. Failure to do this can lead to disciplinary sanctions as set out in the school’s Staff Code of Conduct

You must **not**:

- View, copy, print, share, store or save the imagery yourself, or ask a pupil to share or download it (if you have already viewed the imagery by accident, you must report this to the DSL)
- Delete the imagery or ask the pupil to delete it
- Ask the pupil(s) who are involved in the incident to disclose information regarding the imagery (this is the DSL’s responsibility)
- Share information about the incident with other members of staff, the pupil(s) it involves or their, or other, parents and/or carers
- Say or do anything to blame or shame any young people involved
- You should explain that you need to report the incident, and reassure the pupil(s) that they will receive support and help from the DSL.

#### Holding an Initial review meeting

Following a report of an incident, the DSL will hold an initial review meeting with appropriate school staff – this may include the staff member who reported the incident and the safeguarding or leadership team that deals with safeguarding concerns. This meeting will consider the initial evidence and aim to determine:

- Whether there is an immediate risk to pupil(s)
- If a referral needs to be made to the police and/or children’s social care
- If it is necessary to view the image(s) in order to safeguard the young person (in most cases, images or videos should not be viewed)
- What further information is required to decide on the best response
- Whether the image(s) has been shared widely and via what services and/or platforms (this may be unknown)
- Whether immediate action should be taken to delete or remove images or videos from devices or online services
- Any relevant facts about the pupils involved which would influence risk assessment
- If there is a need to contact another school, college, setting or individual
- Whether to contact parents or carers of the pupils involved (in most cases parents/carers should be involved)

### **The DSL will make an immediate referral to police and/or children's social care if:**

- The incident involves an adult
- There is reason to believe that a young person has been coerced, blackmailed or groomed, or if there are concerns about their capacity to consent (for example, owing to SEN)
- What the DSL knows about the images or videos suggests the content depicts sexual acts which are unusual for the young person's developmental stage, or are violent
- The imagery involves sexual acts and any pupil in the images or videos is under 13
- The DSL has reason to believe a pupil is at immediate risk of harm owing to the sharing of nudes and semi-nudes (for example, the young person is presenting as suicidal or self-harming)

If none of the above apply then the DSL, in consultation with the headteacher and other members of staff as appropriate, may decide to respond to the incident without involving the police or children's social care. The decision will be made and recorded in line with the procedures set out in this policy.

### **Further review by the DSL**

If at the initial review stage a decision has been made not to refer to police and/or children's social care, the DSL will conduct a further review to establish the facts and assess the risks.

They will hold interviews with the pupils involved (if appropriate). If at any point in the process there is a concern that a pupil has been harmed or is at risk of harm, a referral will be made to children's social care and/or the police immediately.

### **Informing parents/carers**

The DSL will inform parents/carers at an early stage and keep them involved in the process, unless there is a good reason to believe that involving them would put the pupil at risk of harm.

### **Referring to the police**

If it is necessary to refer an incident to the police, this will be done through contacting the local neighbourhood police, dialling 101.

### **Recording incidents**

All incidents of sharing of nudes and semi-nudes, and the decisions made in responding to them, will be recorded. The record-keeping arrangements set out in section 15 of this policy also apply to recording these incidents.

### **Curriculum coverage**

Pupils are taught about the issues surrounding the sharing of nudes and semi-nudes as part of our Relationships and Health Education, computing and e-safety curriculum and the PSHE curriculum. Teaching is age-appropriate and covers the following in relation to the sharing of nudes and semi-nudes:

- What it is
- How it is most likely to be encountered
- The consequences of requesting, forwarding or providing such images, including when it is and is not abusive and when it may be deemed as online sexual harassment
- Issues of legality

- The risk of damage to people's feelings and reputation
- Pupils also learn the strategies and skills needed to manage:
- Specific requests or pressure to provide (or forward) such images
- The receipt of such images
- This policy on the sharing of nudes and semi-nudes is also shared with pupils so they are aware of the processes the school will follow in the event of an incident.

#### **7.14 Reporting systems for our pupils**

---

Where there is a safeguarding concern, we will take the child's wishes and feelings into account when determining what action to take and what services to provide.

We recognise the importance of ensuring pupils feel safe and comfortable to come forward and report any concerns and/or allegations.

To achieve this, we will:

- Put systems in place for pupils to confidently report abuse
- Posters of the school's safeguarding team are displayed throughout the school site, providing children with a way in which to easily identify all members of the safeguarding team that they can go to should they have a concern
- Child friendly safeguarding policies are displayed throughout the school reminding children of the procedures to follow should they have any concerns
- Further systems of support are put in place through e.g. support from the pastoral team, learning mentors etc to support children who have reported concerns
- Ensure our reporting systems are well promoted, easily understood and easily accessible for pupils
- Child friendly safeguarding policies are displayed throughout the school reminding children of the procedures to follow should they have any concerns
- Make it clear to pupils that their concerns will be taken seriously, and that they can safely express their views and give feedback
- Child friendly safeguarding policies make it clear that all concerns will be taken seriously by members of the team

### **8. Online safety and the use of mobile technology**

Our online safety policy, including the use of mobile technology, is set out in a separate e-safety policy which can be found on the school's website.

We ensure that we have effective mechanisms to identify, intervene in and escalate any incident where appropriate. Online safety is taught throughout our computing and e-safety curriculum as part of a broad and balanced curriculum.

We recognise the importance of safeguarding children from potentially harmful and inappropriate online material, and we understand that technology is a significant component in many safeguarding and wellbeing issues.

To address this, our school aims to:

- Have robust processes (including filtering and monitoring systems) in place to ensure the online safety of pupils, staff, volunteers and governors
- Protect and educate the whole school community in its safe and responsible use of technology, including mobile and smart technology (which we refer to as 'mobile phones')

- Set clear guidelines for the use of mobile phones for the whole school community
- Establish clear mechanisms to identify, intervene in and escalate any incidents or concerns, where appropriate

#### The 4 key categories of risk:

Our approach to online safety is based on addressing the following categories of risk:

1. **Content** – being exposed to illegal, inappropriate or harmful content, such as pornography, fake news, racism, misogyny, self-harm, suicide, antisemitism, radicalisation and extremism
2. **Contact** – being subjected to harmful online interaction with other users, such as peer-to-peer pressure, commercial advertising and adults posing as children or young adults with the intention to groom or exploit them for sexual, criminal, financial or other purposes
3. **Conduct** – personal online behaviour that increases the likelihood of, or causes, harm, such as making, sending and receiving explicit images (e.g. consensual and non-consensual sharing of nudes and semi-nudes and/or pornography), sharing other explicit images and online bullying; and
4. **Commerce** – risks such as online gambling, inappropriate advertising, phishing and/or financial scams

Educate pupils about online safety as part of our broad and balanced curriculum offer which is threaded through the computing and e-safety curriculum areas. For example:

- The safe use as well as the dangers and risks of social media, the internet and technology
- How to keep personal information private
- How to recognise unacceptable behaviour online and what to do about it
- How to report any incidents of cyber-bullying, ensuring pupils are encouraged to do so, including where they're a witness rather than a victim
- Train staff, as part of their induction, on safe internet use and online safeguarding issues including cyber-bullying, the risks of online radicalisation, and the expectations, roles and responsibilities around filtering and monitoring.

All staff members will receive refresher training as required and at least once each academic year

- Educate parents/carers about online safety via our website, communications sent directly to them such as newsletters and weekly safeguarding briefings for parents, and through regular targeted e-safety workshops. We will also share clear procedures with them so they know how to raise concerns about online safety
- Make sure staff are aware of any restrictions placed on them with regards to the use of their mobile phone and cameras, for example that:
  - Staff are allowed to bring their personal phones to school for their own use, but will limit such use to non-contact time when pupils are not present
  - Staff will not take pictures or recordings of pupils on their personal phones or cameras or devices
- Make sure children are aware of any restrictions placed on them with regards to the use of their mobile phone and cameras, for example that:
  - Children are not allowed to use their mobile phones whilst on the school grounds
  - Children are aware of the systems and procedures for securely storing their mobile phones during the school day
  - Children are aware of the systems and procedures for collecting their mobile phones at the end of the school day
  - Make sure parents/carers are aware of the restriction placed on pupils with regards to the use of mobile phones whilst on the school premises.

- Make all pupils, parents/carers, staff, volunteers and governors aware that they are expected to sign an agreement regarding the acceptable use of the internet in school, use of the school's ICT systems and use of their mobile and smart technology
- Explain the sanctions we will use if a pupil is in breach of our policies on the acceptable use of the internet and mobile phones
- Make sure all staff, pupils and parents/carers are aware that staff have the power to search pupils' phones, as set out in the DfE's guidance on searching, screening and confiscation
- Put in place robust filtering and monitoring systems to limit children's exposure to the 4 key categories of risk (described above) from the school's IT systems. Further details of this can be found in the school's e-safety policy which is available on the school's website.
- Carry out an annual review of our approach to online safety, supported by an annual risk assessment that considers and reflects the risks faced by our school community
- Provide regular safeguarding and children protection updates including online safety to all staff, at least annually, in order to continue to provide them with the relevant skills and knowledge to safeguard effectively
- Review the child protection and safeguarding policy, including online safety, annually and ensure the procedures and implementation are updated and reviewed regularly
- For full details about our school's policies in these areas, please refer to our online safety policy and mobile phone policies which can be found on the school's website.
- The Statutory Framework for the Early Years Foundation Stage states that a setting's safeguarding policy and procedures must "cover the use of mobile phones and cameras in the setting". To ensure the safety and welfare of the children in our care, this policy outlines the protocols for the use of personal mobile phones and cameras in the EYFS setting.
- Make sure staff are aware of any restrictions placed on them with regards to the use of their mobile phone and cameras, for example that:
  - Personally owned mobile phones cannot be used when in the presence of children on the school premises
  - Staff may only use their mobile phones in their lunch and break times in adult only locations on site where children are not present
  - Personal mobiles, including cameras or video recording devices should not be used to record classroom/playground activities or on visits. Only school equipment should be used
  - Photographs and recordings should only be stored on a school device

Make sure parents are aware of any restrictions placed on them with regards to the use of their mobile phone and cameras, for example that:

- No parent/carer is permitted to use their mobile phone or use its camera facility whilst on the premises.

## 8.1 Responsible Use of Artificial Intelligence (AI)

---

Mason Moor recognises the emerging role of Artificial Intelligence (AI) in education and the potential safeguarding risks associated with its use. In line with *Keeping Children Safe in Education (2025)*:

- AI tools will only be used where the school has checked **age restrictions** and **terms of service**.
- Only **enterprise-grade AI tools** with organisational-level controls will be adopted; consumer-level platforms will not be used for pupil learning.
- Interim guidance will be provided to staff and pupils on the **safe, ethical and responsible use of AI**.

- A **Data Protection Impact Assessment (DPIA)** will be completed prior to the implementation of any AI system or tool.
- AI use in school will always be supervised, purposeful, and subject to safeguarding and data protection principles.

## 9. Notifying parents or carers

Where appropriate, we will discuss any concerns about a child with the child's parents or carers. The DSL will normally do this in the event of a suspicion or disclosure.

Other staff will only talk to parents or carers about any such concerns following consultation with the DSL.

If we believe that notifying the parents or carers would increase the risk to the child, we will discuss this with the local authority children's social care team before doing so.

In the case of allegations of abuse made against other children, we will normally notify the parents or carers of all the children involved. We will think carefully about what information we provide about the other child involved, and when. We will work with the police and/or local authority children's social care to make sure our approach to information sharing is consistent.

The DSL will, along with any relevant agencies (this will be decided on a case-by-case basis):

- Meet with the victim's parents or carers, with the victim, to discuss what's being put in place to safeguard them, and understand their wishes in terms of what support they may need and how the report will be progressed
- Meet with the alleged perpetrator's parents or carers to discuss support for them, and what's being put in place that will impact them, e.g. moving them out of classes with the victim, and the reason(s) behind any decision(s)
- Ensure a parent-carer form is completed as a true and accurate reflection of discussions had – signed by both parties.

## 10. Pupils with special educational needs, disabilities, or health issues

Children with special educational needs or disabilities (SEND) or certain medical or physical health conditions can face additional safeguarding challenges both online and offline. Governing bodies and proprietors should ensure their child protection policy reflects the fact that additional barriers can exist when recognising abuse, neglect and exploitation in this group of children. These can include:

- assumptions that indicators of possible abuse such as behaviour, mood and injury relate to the child's condition without further exploration
- these children being more prone to peer group isolation or bullying (including prejudice-based bullying) than other children
- the potential for children with SEND or certain medical conditions being disproportionately impacted by behaviours such as bullying, without outwardly showing any signs
- communication barriers and difficulties in managing or reporting these challenges
- cognitive understanding – being unable to understand the difference between fact and fiction in online content and then repeating the content/behaviours in schools or colleges or the consequences of doing so.

Any reports of abuse involving children with SEND will therefore require close liaison with the designated safeguarding lead (or a deputy) and the special educational needs coordinator (SENCO) or the named person with oversight for SEND

Schools and colleges should consider extra pastoral support and attention for these children, along with ensuring any appropriate support for communication is in place. Further information can be found in the department's:

- SEND Code of Practice 0 to 25 years, and
- Supporting Pupils at School with Medical Conditions.

And from specialist organisations such as:

- The Special Educational Needs and Disabilities Information and Support Services (SENDIASS). SENDIASS offer information, advice and support for parents and carers of children and young people with SEND. All local authorities have such a service: Find your local IAS service (councilfordisabledchildren.org.uk)
- <https://councilfordisabledchildren.org.uk/about-us-0/networks/information-advice-and-support-services-network/find-your-local-ias-service>
- Mencap - Represents people with learning disabilities, with specific advice and information for people who work with children and young people
- NSPCC - Safeguarding children with special educational needs and disabilities (SEND) and NSPCC - Safeguarding child protection/deaf and disabled children and young people

## 11. Children who are lesbian, gay, bisexual, or gender questioning

***N.B. This section remains under review, pending the outcome of the gender questioning children guidance consultation, and final gender questioning guidance documents being published.***

A child or young person being lesbian, gay, or bisexual is not in itself an inherent risk factor for harm, however, they can sometimes be targeted by other children. In some cases, a child who is perceived by other children to be lesbian, gay, or bisexual (whether they are or not) can be just as vulnerable as children who are.

However, the Cass review identified that caution is necessary for children questioning their gender as there remain many unknowns about the impact of social transition and children may well have wider vulnerabilities, including having complex mental health and psychosocial needs, and in some cases additional diagnoses of autism spectrum disorder and/or attention deficit hyperactivity disorder.

It is recommended that when families/carers are making decisions about support for gender questioning children, they should be encouraged to seek clinical help and advice. When parents are supporting pre-pubertal children, clinical services should ensure that they can be seen as early as possible by a clinical professional with relevant experience.

As such, when supporting a gender questioning child, schools should take a cautious approach and consider the broad range of their individual needs, in partnership with the child's parents (other than in the exceptionally rare circumstances where involving parents would constitute a significant risk of harm to the child), including any clinical advice that is available and how to address wider vulnerabilities such as the risk of bullying. Schools should refer to our Guidance for Schools and Colleges in relation to Gender Questioning Children, when deciding how to proceed.

Risks can be compounded where children lack trusted adults with whom they can be open. It is therefore vital that staff endeavour to reduce the additional barriers faced and create a culture where they can speak out or share their concerns with members of staff.

## **12. Pupils with a social worker, or those that previously needed a social worker**

Pupils may need a social worker due to safeguarding or welfare needs. We recognise that a child's experiences of adversity and trauma can leave them vulnerable to further harm as well as potentially creating barriers to attendance, learning, behaviour and mental health. We work with the local authority to ensure that we are providing effective support for this group of children. The DSL and all members of staff will work with and support social workers to help protect vulnerable children. Where we are aware that a pupil has a social worker, the DSL will always consider this fact to ensure that any decisions that are made are in the best interests of the pupil's safety, welfare and educational outcomes. For example, it will inform decisions about;

- Responding to unauthorised absence or missing education where there are known safeguarding risks
- The provision of pastoral and/or academic support

## **13. Looked-after and previously looked-after children**

We will ensure that staff have the skills, knowledge and understanding to keep looked-after children and previously looked-after children safe. In particular, we will ensure that:

- Appropriate staff have relevant information about children's looked after legal status, contact arrangements with birth parents or those with parental responsibility, and care arrangements
- The DSL has details of children's social workers and relevant virtual school heads
- We have appointed a designated teacher, Leanne Scott, who is responsible for promoting the educational achievement of looked-after children and previously looked-after children in line with statutory guidance.

The designated teacher is appropriately trained and has the relevant qualifications and experience to perform the role.

As part of their role, the designated teacher will:

- Work closely with the DSL to ensure that any safeguarding concerns regarding looked-after and previously looked-after children are quickly and effectively responded to
- Work with virtual school heads to promote the educational achievement of looked-after and previously looked-after children, including discussing how pupil premium plus funding can be best used to support looked-after children and meet the needs identified in their personal education plans

## **14. Complaints and concerns about school safeguarding policies**

### **14.1 Complaints against staff**

Complaints against staff that are likely to require a child protection investigation will be handled in accordance with our procedures for dealing with allegations of abuse made against staff (see appendix 3).

### **14.2 Other complaints**

Complaints can be made in line with our school complaints policy which can be found on the school website. The complaint will be dealt with in line with this policy.

### 14.3 Whistle-blowing

---

For information on the way in which the school deals with concerns regarding the way the school safeguards pupils, please refer to the school's Whistleblowing Policy, which can be found on the school's website.

Whistleblowing is the disclosure of information which relates to suspected wrongdoing or dangers at work. The law provides protection for workers who raise legitimate concerns about specified matters or "qualifying disclosures". A qualifying disclosure is one made in the public interest by a worker who has a reasonable belief that wrongdoing or dangers at work. This may include:

- a) criminal activity;
- b) miscarriages of justice;
- c) danger to health and safety;
- d) damage to the environment;
- e) failure to comply with any legal or professional obligation or regulatory requirements
- f) requirements
- g) bribery;
- h) financial fraud or mismanagement;
- i) negligence;
- j) breach of our internal policies and procedures [including our Code of Conduct];
- k) conduct likely to damage our reputation;
- l) unauthorised disclosure of confidential information;
- m) other unethical behaviour
- n) the deliberate concealment of any of the above matters.

The school hopes that staff will be able to raise any concerns with their line manager. They may tell them in person or put the matter in writing if they prefer. The line manager may be able to agree a way of resolving your concern quickly and effectively. However, where the matter is more serious, or the staff member feels their line manager has not addressed your concern, or they prefer not to raise it with them for any reason, or they are the subject of the complaint, then they can raise the matter with:

- i. Assistant Headteacher/Deputy Headteacher
- ii. The Head of School
- iii. The Executive Head Teacher
- iv. The Chair of Governing Board

Should a concern be raised by a non-school based member of staff this should be raised with the appropriate line managers. They may be able to agree a way of resolving your concern quickly and effectively. However, where the matter is more serious, or felt that the line manager has not addressed the concern, or it is preferred not to raise it with them for any reason, or they are the subject of the complaint, then it can be raised with:

- a) An Executive Leader
- b) The Chair of Governing Board

Should a concern be raised by a member of the Executive Team this should be with the appropriate line manager. They may be able to agree on a way of resolving the concern quickly and effectively. However, where the matter is more serious, or felt that the line manager has not addressed the concern, or it is preferred not to raise it with them for any reason, or they are the subject of the complaint, then they can raise the matter with:

- a) The School Board of Governors

b) The Department of Education via the school complaints form on link below Form: Contact the Department for Education

c) Or by post to:

Ministerial and Public Communications Division Department  
Department for Education  
Piccadilly Gate  
Store Street  
Manchester  
M1 2WD

The school will arrange a meeting with the whistle-blower as soon as possible to discuss the concern.

A written summary of the concern will be taken, and the school will also aim to give you an indication of how they propose to deal with the matter.

The school hopes that staff will feel able to voice whistleblowing concerns openly under the whistleblowing policy. However, if staff want to raise their concern confidentially, the school will make every effort to keep their identity secret. If it is necessary for anyone investigating your concern to know your identity, this will be discussed with them first.

## 15. Record-keeping

The designated safeguarding lead is responsible for ensuring that child protection files are kept up to date. They should ensure the file is only accessed by those who need to see it and where the file or content within is shared, this happens in line with information sharing advice set out in Parts one and two of KCSIE 2025.

We will hold records in line with our records retention schedule.

All safeguarding concerns, discussions, decisions made and the reasons for those decisions, including evidence of defensible decision making must be recorded on the school's online safeguarding platform, CPOMS. If you are in any doubt about whether to record something, discuss it with the DSL in the first instance.

### **When a child makes a disclosure, the member of staff/volunteer should;**

- Record the concern as soon as possible after the conversation with the child has taken place using the school's online safeguarding platform
- Not destroy the original notes in case they are needed in court or as part of a review
- Record the date, time, place and any noticeable non-verbal behaviour and the words used by the child
- Where appropriate use the body map diagram to indicate the position of any injuries
- Record statements and observations rather than interpretations or assumptions.

All records should be completed as soon as possible. No copies should be retained by the member of staff or volunteer.

### **Records will include:**

- A clear and comprehensive summary of the concern
- Details of how the concern was followed up and resolved
- A note of any action taken, decisions reached and the outcome

Any non-confidential records will be readily accessible and available. Confidential information and records will be held securely and only available to those who have a right or professional need to see them.

Safeguarding records relating to individual children will be retained for a reasonable period of time after they have left the school.

If a child for whom the school has, or has had, safeguarding concerns moves to another school, the DSL will ensure that their child protection file is forwarded as soon as possible, securely, and separately from the main pupil file.

To allow the new school to have support in place when the child arrives, this should be within:

- **5 days** for an in-year transfer, or within
- **The first 5 days** of the start of a new term

In addition, if the concerns are significant or complex, and/or social services are involved, the DSL will speak to the DSL of the receiving school and provide information to enable them to have time to make any necessary preparations to ensure the safety of the child.

- Appendix 2 sets out our policy on record-keeping specifically with respect to recruitment and pre-appointment checks
- Appendix 3 sets out our policy on record-keeping with respect to allegations of abuse made against staff

## 16. Relationships, Sex and Health Education (RSHE)

Today's children and young people are growing up in an increasingly complex world and living their lives seamlessly on and offline. This presents many positive and exciting opportunities, but also challenges and risks. In this environment, children and young people need to know how to be safe and healthy, and how to manage their academic, personal and social lives in a positive way.

The focus in primary school should be on teaching the fundamental building blocks and characteristics of positive relationships, with particular reference to friendships, family relationships, and relationships with other children and with adults.

The RSHE Curriculum is taught and delivered through our school's Personal, Social, Health and Economic (PSHE) curriculum. In addition, other aspects of the statutory RSHE Curriculum will also be covered through other areas of the wider curriculum and/or events such as:

- Science curriculum
- Computing curriculum
- Circle times
- Assemblies
- Stories
- PE in the context of health and hygiene

Through the delivery of our PSHE curriculum, we aim to provide children with the knowledge, skills and understanding they need to lead confident, healthy, independent lives and to become informed, active and responsible citizens. In providing children with an understanding of healthy and respectful relationships and appropriate boundaries, we consider effective RSHE to be a

fundamental part of our approach to supporting pupils to grow into confident, caring, responsible and respectful young citizens.

RSHE is lifelong learning about personal, physical, moral and emotional development. It should teach children and young people to develop and form positive values, attitudes, personal and social skills, and increase their knowledge and understanding of how to make informed decisions and life choices.

The aims of Relationships and Health Education (RSHE) at our school are to:

- Provide a consistent standard of relations and health education across the school
- Help pupils develop feelings of self-respect, confidence and empathy
- Promote responsible behaviour
- Create a positive culture of communication around issues of relationships
- Teach pupils the correct vocabulary to describe themselves and their bodies
- Provide a framework in which sensitive discussions can take place
- Prepare pupils for puberty and the importance of health and hygiene
- Ensure that all pupils, by the time they reach secondary school age, are well equipped and on an equal footing, to deal with the secondary RSHE curriculum.
- To provide all pupils with knowledge, skills, and attitudes that will enable them to make positive and healthy choices concerning relationships as they grow up and deal with risk.
- Combat exploitation.

These aims complement those of the National Curriculum for Science in KS1 and KS2.

The school's Relationships and Sex Education Policy can be found on the school's website.

## 17. Training

### 17.1 Raising awareness

---

The designated safeguarding lead should:

- ensure each member of staff has access to, and understands, the school or college's child protection policy and procedures, especially new and part-time staff
- ensure the school or college's child protection policy is reviewed annually (as a minimum) and the procedures and implementation are updated and reviewed regularly, and work with governing bodies regarding this
- ensure the child protection policy is available publicly and parents know that referrals about suspected abuse or neglect may be made and the role of the school or college in this
- link with the safeguarding partner arrangements to make sure staff are aware of any training opportunities and the latest local policies on local safeguarding arrangements, and
- help promote educational outcomes by sharing information about welfare, safeguarding and child protection issues that children who have or have had a social worker are experiencing with teachers and school and college leadership staff.

### 17.2 All staff

---

The school is committed to continuous professional development in relation to safeguarding to ensure that staff fully understand their safeguarding responsibilities, that training promotes a culture of safeguarding and equips staff with the skills to identify any signs of abuse, neglect or harm.

All staff members will undertake regular safeguarding and child protection training annually or upon induction, including on whistle-blowing procedures and online safety, to ensure they

understand the school's safeguarding systems and their responsibilities, and can identify signs of possible abuse or neglect.

Staff members are also provided with additional safeguarding training through an ongoing in-house Partnership safeguarding programme.

This training will be regularly updated and will:

- Be integrated, aligned and considered as part of the whole-school safeguarding approach and wider staff training, and curriculum planning
- Be in line with advice from safeguarding partners
- Include online safety, including an understanding of the expectations, roles and responsibilities for staff around filtering and monitoring
- Have regard to the Teachers' Standards to support the expectation that all teachers:
- Manage behaviour effectively to ensure a good and safe environment
- Have a clear understanding of the needs of all pupils
- All staff will have training on the government's anti-radicalisation strategy, prevent, to enable them to identify children at risk of being drawn into terrorism and to challenge extremist ideas
- Staff will also receive regular safeguarding and child protection updates, including online safety, as required but at least annually (for example, through regular emails, weekly safeguarding email briefings, staff meetings, specific training sessions etc).
- Contractors will also receive safeguarding training.
- Volunteers will receive appropriate training, if applicable
- Teachers will receive training to ensure that they can manage behaviour effectively to ensure a good and safe educational environment and they should have a clear understanding of the needs of all pupils.

## **17.2 The DSL, DDSL and members of the wider safeguarding team**

---

In addition to the above, the DSL, DDSL and members of the school's wider safeguarding team will undertake Designated Safeguarding Leads training at least every 2 years, preferably through an external provider delivered through face-to-face sessions where possible. (Hampshire and Southampton City Council)

In addition to the formal training set out above, their knowledge and skills should be refreshed (this might be via e-bulletins, meeting other designated safeguarding leads, or simply taking time to read and digest safeguarding developments) at regular intervals, as required, and at least annually, to allow them to understand and keep up with any developments relevant to their role.

They will also undertake Prevent awareness training.

## **17.3 Governors**

---

All members, executive leaders and those attending as observers receive training about safeguarding and child protection (including online safety) at induction, which is updated annually.

This is to make sure that they:

- Have the knowledge and information needed to perform their functions and understand their responsibilities, such as providing strategic challenge
- Can be assured that safeguarding policies and procedures are effective and support the school to deliver a robust whole-school approach to safeguarding

- As the chair of governors may be required to act as the 'case manager' in the event that an allegation of abuse is made against the headteacher, they receive training in managing allegations for this purpose

#### **17.4 Specific Safeguarding Issues**

---

Staff will also receive specific safeguarding training related to the following issues, and action will be taken if the school suspects that a child is at risk of or is the victim of;

- physical abuse;
- sexual abuse;
- child sexual exploitation;
- emotional abuse;
- neglect
- child criminal exploitation (including involvement in county lines)
- domestic abuse
- fabricated or induced illness
- faith-based abuse
- female genital mutilation
- forced marriage
- gangs or youth violence
- gender-based violence
- hate
- online safety
- child on child abuse
- radicalisation
- relationship abuse
- serious violence
- sexual violence or sexual harassment (including peer on peer abuse);
- sexting or sharing of youth produced sexual imagery
- so-called 'honour-based' abuse
- trafficking and modern slavery

All staff will be made aware that safeguarding incidents and/or behaviours can be associated with factors outside the school or college and/or can occur between children outside of these environments. All staff will be expected to consider whether children are at risk of abuse or exploitation in situations outside their families (extra-familial harm).

Staff will also be made aware of the additional safeguarding vulnerabilities of;

- children in the court system
- children missing from education (CMfE)
- children with family members in prison
- children who are homeless
- children who have or have had a social worker
- children who are young carers
- children looked after or previously looked after (LAC and PLAC)
- children with mental health problems

#### **17.4 Recruitment – interview panels**

---

At least 1 person conducting any interview for any post at the school will have undertaken safer recruitment training. This will cover, as a minimum, the contents of Keeping Children Safe in Education, and will be in line with local safeguarding procedures.

See appendix 2 of this policy for more information about our safer recruitment procedures.

### **17.5 Supervision**

All staff who have contact with children and families will have supervisions which will provide them with support, coaching and training, promote the interests of children and allow for confidential discussions of sensitive issues.

EYFS staff undertake supervision with a leader who is not their direct line manager, or connected to the setting, each term.

## **18. Use of School Premises**

On occasions where school premises are hired to run non-school activities the letting policy is followed and an agreement between the hirer and the school is signed by both parties to adhere to the policy.

The school is dedicated to ensuring the safeguarding of its pupils at all times. It is a requirement of hire that hirers abide by the schools' requirements in respect of safeguarding. Any failure from the hirer in this respect will result in the hire being terminated.

It is the responsibility of the hirers to ensure that safeguarding measures are in place while hiring out the space.

If there is a chance that those hiring the premises will come into contact with pupils, for example if the hire occurs during school hours, or when pupils may be present in the school (during after-school clubs or extra-curricular activities), we will ask for confirmation that the hirers have had the appropriate level of DBS check.

The hirer will be required to have appropriate safeguarding policies in place, including safeguarding and child protection, and shall provide copies of these policies on request to the school.

The hirer confirms that, should any safeguarding concerns present themselves during the hire of the school premises, they shall contact the DSL, (or the Safeguarding Lead at the time as per the safeguarding rota during periods of school closure) as soon as reasonably practicable.

If the school receives an allegation relating to an incident that happened when an individual or organisation was using the school premises for the purposes of running activities for children, as with any safeguarding allegation, the schools will follow their safeguarding policies and procedures, including informing the LADO.

## **19. Monitoring arrangements**

The policy will be reviewed annually by the governing board. It will be implemented through the school's induction and training programme, and as part of day-to-day practice. Compliance with the policy will be monitored by the Designated Safeguarding Lead and through staff performance measures.

## 20. Links with other policies

This policy links to the following policies and procedures:

- Behaviour
- Staff Code of Conduct
- Complaints policy
- Health and safety policy
- Attendance policy
- Online safety policy
- SEND policy
- Equality policy
- Mobile phone use
- Equality policy
- Relationships and sex education
- First aid policy
- Curriculum
- Designated teacher for looked-after and previously looked-after children policy
- Privacy notices
- Whistle-blowing policy
- Anti-bullying policy

## Appendix 1: types of abuse

---

**Abuse**, including neglect, and safeguarding issues are rarely standalone events that can be covered by 1 definition or label. In most cases, multiple issues will overlap.

**Physical abuse** may involve hitting, shaking, throwing, poisoning, burning or scalding, drowning, suffocating or otherwise causing physical harm to a child. Physical harm may also be caused when a parent or carer fabricates the symptoms of, or deliberately induces, illness in a child.

**Emotional abuse** is the persistent emotional maltreatment of a child such as to cause severe and adverse effects on the child's emotional development. Some level of emotional abuse is involved in all types of maltreatment of a child, although it may occur alone.

Emotional abuse may involve:

- Conveying to a child that they are worthless or unloved, inadequate, or valued only insofar as they meet the needs of another person
- Not giving the child opportunities to express their views, deliberately silencing them or 'making fun' of what they say or how they communicate
- Age or developmentally inappropriate expectations being imposed on children. These may include interactions that are beyond a child's developmental capability, as well as overprotection and limitation of exploration and learning, or preventing the child participating in normal social interaction
- Seeing or hearing the ill-treatment of another
- Serious bullying (including cyber-bullying), causing children frequently to feel frightened or in danger, or the exploitation or corruption of children

**Sexual abuse** involves forcing or enticing a child or young person to take part in sexual activities, not necessarily involving a high level of violence, whether or not the child is aware of what is happening. The activities may involve:

- Physical contact, including assault by penetration (for example, rape or oral sex) or non penetrative acts such as masturbation, kissing, rubbing and touching outside of clothing
- Non-contact activities, such as involving children in looking at, or in the production of, sexual images, watching sexual activities, encouraging children to behave in sexually inappropriate ways, or grooming a child in preparation for abuse (including via the internet)
- Sexual abuse is not solely perpetrated by adult males. Women can also commit acts of sexual abuse, as can other children.

**Neglect** is the persistent failure to meet a child's basic physical and/or psychological needs, likely to result in the serious impairment of the child's health or development. Neglect may occur during pregnancy as a result of maternal substance abuse.

Once a child is born, neglect may involve a parent or carer failing to:

- Provide adequate food, clothing and shelter (including exclusion from home or abandonment)
- Protect a child from physical and emotional harm or danger
- Ensure adequate supervision (including the use of inadequate care-givers)
- Ensure access to appropriate medical care or treatment
- It may also include neglect of, or unresponsiveness to, a child's basic emotional needs.

## **Appendix 2: Safer Recruitment and DBS checks – policy and procedures**

---

### **Recruitment and selection process**

To make sure we recruit suitable people, we will ensure that those involved in the recruitment and employment of staff to work with children have received appropriate safer recruitment training.

We have put the following steps in place during our recruitment and selection process to ensure we are committed to safeguarding and promoting the welfare of children.

### **Advertising**

When advertising roles, we will make clear:

- The skills, abilities, experience, attitude, and behaviours required for the post
- The safeguarding requirements, i.e. to what extent will the role involve contact with children and will they be engaging in regulated activity relevant to children.
- Our school's commitment to safeguarding and promoting the welfare of children
- That safeguarding checks will be undertaken as part of the process – including social media presence checks.
- The safeguarding requirements and responsibilities of the role, such as the extent to which the role will involve contact with children
- Whether or not the role is exempt from the Rehabilitation of Offenders Act 1974 and the amendments to the Exceptions Order 1975, 2013 and 2020. If the role is exempt, certain spent convictions and cautions are 'protected', so they do not need to be disclosed, and if they are disclosed, we cannot take them into account

### **Application forms**

Our application forms will:

- Include a statement saying that it is an offence to apply for the role if an applicant is barred from engaging in regulated activity relevant to children (where the role involves this type of regulated activity)
- • Include a copy of, or link to, our child protection and safeguarding policy and our policy on the employment of ex-offenders
- • Inform applicants that online checks will be conducted as part of the recruitment process for all shortlisted candidates. Candidates will be asked to provide their usernames/handles for 4 social media platforms to support these online searches, Facebook, X, Instagram and LinkedIn.

We require applications to provide;

- Personal details, current and former names, current address and their national insurance number;
- Details of their present (or last) employment and reason for leaving
- Full employment history, (since leaving school, including education, employment and voluntary work including reasons for any gaps in employment
- Qualifications, the awarding body and date of award
- Details of referees/references
- A statement of the personal qualities and experience that the applicant believes are relevant to their suitability for the post advertised and how they meet the person specification

We will not accept copies of curriculum vitae in place of an application.

### **Shortlisting**

Our shortlisting process will involve at least 2 people and will:

- Consider any inconsistencies and look for gaps in employment and reasons given for them
- Explore all potential concerns

Once we have shortlisted candidates, we will ask shortlisted candidates to:

- Complete a self-declaration of their criminal record or any information that would make them unsuitable to work with children, so that they have the opportunity to share relevant information and discuss it at interview stage. The information we will ask for includes:
  - If they have a criminal history
  - Whether they are included on the barred list
  - Whether they are prohibited from teaching
  - Information about any criminal offences committed in any country in line with the law as applicable in England and Wales
  - Any relevant overseas information
- • Sign a declaration confirming the information they have provided is true

In addition, as part of the shortlisting process, those responsible for recruitment will also conduct an online search as part of their due diligence on the shortlisted candidates. This may help identify any incidents or issues that have happened, and are publicly available online, which the school might want to explore with the applicant at interview. The application form should inform shortlisted candidates that online searches will be conducted as part of due diligence checks. See Part two - Legislation and the Law for information on data protection and UK GDPR.

### **Seeking references and checking employment history**

We will obtain references for all shortlisted candidates before the interview, this includes any internal staff. Any concerns raised will be explored further with referees and taken up with the candidate at interview.

When seeking references we will:

- Not accept open references
- Liaise directly with referees and verify any information contained within references with the referees
- Ensure any references are from the candidate's current employer and completed by a senior person. Where the referee is school based, we will ask for the reference to be confirmed by the headteacher/principal as accurate in respect to disciplinary investigations
- Obtain verification of the candidate's most recent relevant period of employment if they are not currently employed
- Secure a reference from the relevant employer from the last time the candidate worked with children if they are not currently working with children
- Compare the information on the application form with that in the reference and take up any inconsistencies with the candidate
- Resolve any concerns before any appointment is confirmed

### **Interview and selection**

When interviewing candidates, we will:

- Probe any gaps in employment, or where the candidate has changed employment or location frequently, and ask candidates to explain this
- Explore any potential areas of concern to determine the candidate's suitability to work with children, including any concerns raised as part of the online checks process.
- All information considered in decision making should be clearly recorded along with decisions made.

### **Pre-appointment vetting checks**

We will record all information on the checks carried out in the school's single central record (SCR). Copies of these checks, where appropriate, will be held in individuals' personnel files. We follow requirements and best practice in retaining copies of these checks, as set out below.

All offers of appointment should be conditional until satisfactory completion of the **mandatory pre-employment checks**. All schools must:

### **New staff**

- Verify a candidate's identity, it is important to be sure that the person is who they claim to be, this includes being aware of the potential for individuals changing their name. Best practice is checking the name on their birth certificate, where this is available. Further identification checking guidelines can be found on the GOV.UK website
- Obtain (via the applicant) an enhanced DBS certificate, including barred list information for those who will be engaging in regulated activity (see definition below). We will obtain the certificate before, or as soon as practicable after, appointment, including when using the DBS update service. We will not keep a copy of the certificate for longer than 6 months, but when the copy is destroyed we may still keep a record of the fact that vetting took place, the result of the check and recruitment decision taken
- Obtain a separate children's barred list check if an individual will start work in regulated activity with children before the DBS certificate is available; See KCSiE paragraph 267-268 on how to obtain a separate children's barred list check
- Verify the candidate's mental and physical fitness to carry out their work responsibilities.<sup>68</sup> A job applicant can be asked relevant questions about disability and health in order to establish whether they have the physical and mental capacity for the specific role

- Verify the person's right to work in the UK, including EU nationals. If there is uncertainty about whether an individual needs permission to work in the UK, then schools and colleges should follow advice on the GOV.UK website
- if the person has lived or worked outside the UK, make any further checks the school consider appropriate (see KCSiE 286-290)
- verify professional qualifications, as appropriate. The Teaching Regulation Agency's (TRA) Employer Access Service should be used to verify any award of qualified teacher status (QTS), and the completion of teacher induction or probation.
- Ensure they are not subject to a prohibition order if they are employed to be a teacher
- Carry out further additional checks, as appropriate, on candidates who have lived or worked outside of the UK. These could include, where available:
- Check that candidates taking up a management position\* are not subject to a prohibition from management (section 128) direction made by the secretary of state
- Before employing a person to carry out teaching work in relation to children, take reasonable steps to establish whether that person is subject to a prohibition order issued by the Secretary of State
- Ensure that appropriate checks are carried out to ensure that individuals employed to work in reception classes, or in wraparound care for children up to the age of 8, are not disqualified from working in these settings under the 2018 Childcare Disqualification Regulations. Further details about the application of these arrangements are provided at paragraphs 269-273. When we take a decision that an individual falls outside of the scope of these regulations and we do not carry out such checks, we will retain a record of our assessment on the individual's personnel file. This will include our evaluation of any risks and control measures put in place, and any advice sought.

*\*Management positions are most likely to include, but are not limited to, headteachers, principals and deputy/assistant headteachers.*

### **Regulated activity**

In summary, a person will be engaging in regulated activity with children if, as a result of their work, they:

- will be responsible, on a regular basis in a school or college, for teaching, training instructing, caring for or supervising children
- will be working on a regular basis in a specified establishment, such as a school, or in connection with the purposes of the establishment, where the work gives opportunity for contact with children, or
- engage in intimate or personal care or healthcare or any overnight activity, even if this happens only once.

### **Existing staff**

In certain circumstances we will carry out all the relevant checks on existing staff as if the individual was a new member of staff. These circumstances are when:

- There are concerns about an existing member of staff's suitability to work with children; or
- An individual moves from a post that is not regulated activity to one that is; or
- There has been a break in service of 12 weeks or more

We will refer to the DBS anyone who has harmed, or poses a risk of harm, to a child or vulnerable adult where:

- We believe the individual has engaged in relevant conduct; or
- We believe the individual has received a caution or conviction for a relevant (automatic barring either with or without the right to make representations) offence, under the Safeguarding Vulnerable Groups Act 2006 (Prescribed Criteria and Miscellaneous Provisions) Regulations 2009; or
- We believe the 'harm test' is satisfied in respect of the individual (i.e. they may harm a child or vulnerable adult or put them at risk of harm); and
- The individual has been removed from working in regulated activity (paid or unpaid) or would have been removed if they had not left

### **Agency and third-party staff**

We will obtain written notification from any agency or third-party organisation that it has carried out the necessary safer recruitment checks that we would otherwise perform. We will also check that the person presenting themselves for work is the same person on whom the checks have been made through the use of photographic ID as part of our vetting checks.

### **Contractors**

We will ensure that any contractor, or any employee of the contractor, who is to work at the school has had the appropriate level of DBS check (this includes contractors who are provided through a contract). This will be:

- An enhanced DBS check with barred list information for contractors engaging in regulated activity
- An enhanced DBS check, not including barred list information, for all other contractors who are not in regulated activity but whose work provides them with an opportunity for regular contact with children

We will;

- obtain the DBS check for self-employed contractors.

We will not;

- keep copies of such checks for longer than 6 months
- We will check the identity of all contractors and their staff on arrival at the school.

Contractors who have not had any checks will not be allowed to work unsupervised or engage in regulated activity under any circumstances.

For self-employed contractors such as music teachers or sports coaches, we will ensure that appropriate checks are carried out to ensure that individuals are not disqualified under the 2018 Childcare Disqualification Regulations and Childcare Act 2006. When we decide that an individual falls outside of the scope of these regulations and we do not carry out such checks, we will retain a record of our assessment. This will include our evaluation of any risks and control measures put in place, and any advice sought.

### **Trainee/student teachers**

Where applicants for initial teacher training are salaried by us, we will ensure that all necessary checks are carried out.

Where trainee teachers are fee-funded, we will obtain written confirmation from the training provider that necessary checks have been carried out and that the trainee has been judged by the provider to be suitable to work with children.

In both cases, this includes checks to ensure that individuals are not disqualified under the 2018 Childcare Disqualification Regulations and Childcare Act 2006.

### **Volunteers**

We will:

- Never leave an unchecked volunteer unsupervised or allow them to work in regulated activity
- Obtain an enhanced DBS check with barred list information for all volunteers who are new to working in regulated activity
- Carry out a risk assessment when deciding whether to seek an enhanced DBS check without barred list information for any volunteers not engaging in regulated activity. We will retain a record of this risk assessment
- Ensure that appropriate checks are carried out to ensure that individuals are not disqualified under the 2018 Childcare Disqualification Regulations and Childcare Act 2006. Where we decide that an individual falls outside of the scope of these regulations and we do not carry out such checks, we will retain a record of our assessment. This will include our evaluation of any risks and control measures put in place, and any advice sought

### **Governors**

All local governors will have an enhanced DBS check with barred list information.

They will have an enhanced DBS check with barred list information if working in regulated activity.

All governors will also have a section 128 check (as a section 128 direction disqualifies an individual from being a maintained school governor).

The chair of the board will have their DBS check countersigned by the secretary of state. All local governors and members will also have the following checks:

- A section 128 check (to check prohibition on participation in management under section 128 of the Education and Skills Act 2008). [Section 128 checks are only required for local governors if they have retained or been delegated any management responsibilities.]
- Identity
- Right to work in the UK
- Other checks deemed necessary if they have lived or worked outside the UK

### **Staff working in alternative provision settings**

When we place a pupil with an alternative provision provider, we obtain written confirmation from the provider that they have carried out the appropriate safeguarding checks on individuals working there that we would otherwise perform.

Where a school places a pupil with an alternative provision provider, it continues to be responsible for the safeguarding of that pupil and should be satisfied that the placement meets the pupil's needs.

### **Adults who supervise pupils on work experience**

When organising work experience, we will ensure that policies and procedures are in place to protect children from harm.

We will also consider whether it is necessary for barred list checks to be carried out on the individuals who supervise a pupil under 16 on work experience. This will depend on the specific circumstances of the work experience, including the nature of the supervision, the frequency of the activity being supervised, and whether the work is regulated activity.

## **Appendix 3: Allegations of abuse made against staff (including low-level concerns)**

---

## **Section 1: Allegations that may meet the harms threshold**

This section applies to all cases in which it is alleged that a current member of staff, including a supply teacher, volunteer or contractor, has:

- Behaved in a way that has harmed a child, or may have harmed a child, and/or
- Possibly committed a criminal offence against or related to a child, and/or
- Behaved towards a child or children in a way that indicates they may pose a risk of harm to children, and/or
- Behaved or may have behaved in a way that indicates they may not be suitable to work with children – this includes behaviour taking place both inside and outside of school

If a concern or allegation of abuse arises against any member of staff, supply teacher or volunteer other than the headteacher, it must be reported to the headteacher without delay. This includes supply staff, volunteers, and anyone working in or on behalf of the school, whether paid or unpaid. Allegations of abuse against staff must be reported to the Headteacher or Chair of governors as appropriate and not discussed directly with the person involved.

If we're in any doubt as to whether a concern meets the harm threshold, we will consult our local authority designated officer (LADO).

We will deal with any allegation of abuse quickly, in a fair and consistent way that provides effective child protection while also supporting the individual who is the subject of the allegation.

A 'case manager' will lead any investigation. This will normally be the headteacher.

In the event that the allegation is against the head of school, the concern must be reported to the Executive Headteacher who will manage the case. Allegations against the Executive headteacher must be reported to Amanda Humby, Chair of Governors. Allegations made against the Chair of the board must be reported to the Department for Education.

The case manager will be identified at the earliest opportunity. Our procedures for dealing with allegations will be applied with common sense and judgement.

If we receive an allegation of an incident happening while an individual or organisation was using the school premises to run activities for children, we will follow our safeguarding policies and procedures and inform our LADO.

## **Suspension of the accused until the case is resolved**

Suspension of the accused will not be the default position, and will only be considered in cases where there is reason to suspect that a child or other children is/are at risk of harm, or the case is so serious that there might be grounds for dismissal. In such cases, we will only suspend an individual if we have considered all other options available and there is no reasonable alternative.

Based on an assessment of risk, we will consider alternatives such as:

- Redeployment within the school so that the individual does not have direct contact with the child or children concerned
- Providing an assistant to be present when the individual has contact with children
- Redeploying the individual to alternative work in the school so that they do not have unsupervised access to children

- Moving the child or children to classes where they will not come into contact with the individual, making it clear that this is not a punishment and parents/carers have been consulted
- Temporarily redeploying the individual to another role in a different location, for example to an alternative school.

If in doubt, the case manager will seek views from the school's personnel adviser and the designated officer at the local authority, as well as the police and children's social care where they have been involved.

### **Definitions for outcomes of allegation investigations**

- **Substantiated:** there is sufficient evidence to prove the allegation
- **Malicious:** there is sufficient evidence to disprove the allegation and there has been a deliberate act to deceive, or to cause harm to the subject of the allegation
- **False:** there is sufficient evidence to disprove the allegation
- **Unsubstantiated:** there is insufficient evidence to either prove or disprove the allegation (this does not imply guilt or innocence)
- **Unfounded:** to reflect cases where there is no evidence or proper basis which supports the allegation being made

### **Procedure for dealing with allegations**

In the event of an allegation that meets the criteria above, the case manager as defined above will take the following steps:

- Conduct basic enquiries in line with local procedures to establish the facts to help determine whether there is any foundation to the allegation before carrying on with the steps below
- Discuss the allegation with the designated officer at the local authority. This is to consider the nature, content and context of the allegation and agree a course of action, including whether further enquiries are necessary to enable a decision on how to proceed, and whether it is necessary to involve the police and/or children's social care services. (The case manager may, on occasion, consider it necessary to involve the police *before* consulting the designated officer – for example, if the accused individual is deemed to be an immediate risk to children or there is evidence of a possible criminal offence. In such cases, the case manager will notify the designated officer as soon as practicably possible after contacting the police)
- Inform the accused individual of the concerns or allegations and likely course of action as soon as possible after speaking to the designated officer (and the police or children's social care services, where necessary). Where the police and/or children's social care services are involved, the case manager will only share such information with the individual as has been agreed with those agencies
- Where appropriate (in the circumstances described above), carefully consider whether suspension of the individual from contact with children at the school is justified or whether alternative arrangements such as those outlined above can be put in place. Advice will be sought from the designated officer, police and/or children's social care services, as appropriate
- Where the case manager is concerned about the welfare of other children in the community or the individual's family, they will discuss these concerns with the DSL and make a risk assessment of the situation. If necessary, the DSL may make a referral to children's social care

- **If immediate suspension is considered necessary**, agree and record the rationale for this with the designated officer. The record will include information about the alternatives to suspension that have been considered, and why they were rejected. Written confirmation of the suspension will be provided to the individual facing the allegation or concern within 1 working day, and the individual will be given a named contact at the school and their contact details
- **If it is decided that no further action is to be taken** in regard to the subject of the allegation or concern, record this decision and the justification for it and agree with the designated officer what information should be put in writing to the individual and by whom, as well as what action should follow both in respect of the individual and those who made the initial allegation
- **If it is decided that further action is needed**, take steps as agreed with the designated officer to initiate the appropriate action in school and/or liaise with the police and/or children's social care services as appropriate
- Provide effective support for the individual facing the allegation or concern, including appointing a named representative to keep them informed of the progress of the case and considering what other support is appropriate. The school provides an Employee Assistance Programme which staff can use for support.
- Inform the parents or carers of the child/children involved about the allegation as soon as possible if they do not already know (following agreement with children's social care services and/or the police, if applicable). The case manager will also inform the parents or carers of the requirement to maintain confidentiality about any allegations made against teachers (where this applies) while investigations are ongoing. Any parent or carer who wishes to have the confidentiality restrictions removed in respect of a teacher will be advised to seek legal advice
- Keep the parents or carers of the child/children involved informed of the progress of the case (only in relation to their child – no information will be shared regarding the staff member)
- Make a referral to the DBS where it is thought that the individual facing the allegation or concern has engaged in conduct that harmed or is likely to harm a child, or if the individual otherwise poses a risk of harm to a child

If during an investigation relating to an allegation of abuse, an employee tenders their resignation, or ceases to provide their services, the School is not prevented from following up an allegation in accordance with these procedures. Every effort will be made to reach a conclusion in cases relating to the welfare of children or adults at risk, including those where the person concerned refuses to co-operate with the process.

If the School dismisses or ceases to use the services of a member of staff because of serious misconduct or might have dismissed them if they had not resigned, the School must still consider whether a referral to the Disclosure and Barring Service is warranted. If the criteria for a referral are met, it is not appropriate to reach a settlement/compromise agreement.

We will inform Ofsted of any allegations of serious harm or abuse by any person living, working, or looking after children at the premises (whether the allegations relate to harm or abuse committed on the premises or elsewhere), and any action taken in respect of the allegations. This notification will be made as soon as reasonably possible and always within 14 days of the allegations being made.

If the school is made aware that the secretary of state has made an interim prohibition order in respect of an individual, we will immediately suspend that individual from teaching, pending the findings of the investigation by the Teaching Regulation Agency.

Where the police are involved, wherever possible the school will ask the police at the start of the investigation to obtain consent from the individuals involved to share their statements and evidence for use in the school's disciplinary process, should this be required at a later point.

### **Additional considerations for supply teachers and all contracted staff**

If there are concerns or an allegation is made against someone not directly employed by the school, such as a supply teacher or contracted staff member provided by an agency, we will take the actions below in addition to our standard procedures.

- We will not decide to stop using an individual due to safeguarding concerns without finding out the facts and liaising with our LADO to determine a suitable outcome
- The governing board will discuss with the agency whether it is appropriate to suspend the individual, or redeploy them to another part of the school, while the school carries out the investigation
- We will involve the agency fully, but the school will take the lead in collecting the necessary information and providing it to the LADO as required
- We will address issues such as information sharing, to ensure any previous concerns or allegations known to the agency are taken into account (we will do this, for example, as part of the allegations management meeting or by liaising directly with the agency where necessary)

When using an agency, we will inform them of our process for managing allegations, and keep them updated about our policies as necessary, and will invite the agency's HR manager or equivalent to meetings as appropriate.

### **Timescales**

We will deal with all allegations as quickly and effectively as possible and will endeavour to comply with the following timescales, where reasonably practicable:

- Any cases where it is clear immediately that the allegation is unsubstantiated or malicious should be resolved within 1 week
- If the nature of an allegation does not require formal disciplinary action, appropriate action should be taken within 3 working days
- If a disciplinary hearing is required and can be held without further investigation, this should be held within 15 working days

However, these are objectives only and where they are not met, we will endeavour to take the required action as soon as possible thereafter.

### **Specific actions**

#### **Action following a criminal investigation or prosecution**

The case manager will discuss with the local authority's designated officer whether any further action, including disciplinary action, is appropriate and, if so, how to proceed, taking into account information provided by the police and/or children's social care services.

#### **Conclusion of a case where the allegation is substantiated**

If the allegation is substantiated and the individual is dismissed or the school ceases to use their services, or the individual resigns or otherwise ceases to provide their services, the school will make a referral to the DBS for consideration of whether inclusion on the barred lists is required.

If the individual concerned is a member of teaching staff, the school will consider whether to refer the matter to the Teaching Regulation Agency to consider prohibiting the individual from teaching.

### **Individuals returning to work after suspension**

If it is decided on the conclusion of a case that an individual who has been suspended can return to work, the case manager will consider how best to facilitate this.

The case manager will also consider how best to manage the individual's contact with the child or children who made the allegation, if they are still attending the school.

### **Unsubstantiated, unfounded, false or malicious reports**

If a report is:

- Determined to be unsubstantiated, unfounded, false or malicious, the DSL will consider the appropriate next steps. If they consider that the child and/or person who made the allegation is in need of help, or the allegation may have been a cry for help, a referral to children's social care may be appropriate
- Shown to be deliberately invented, or malicious, the school will consider whether any disciplinary action is appropriate against the individual(s) who made it

### **Unsubstantiated, unfounded, false or malicious allegations**

If an allegation is:

- Determined to be unsubstantiated, unfounded, false or malicious, the LADO and case manager will consider the appropriate next steps. If they consider that the child and/or person who made the allegation is in need of help, or the allegation may have been a cry for help, a referral to children's social care may be appropriate
- Shown to be deliberately invented, or malicious, the school will consider whether any disciplinary action is appropriate against the individual(s) who made it

### **Confidentiality and information sharing**

The school will make every effort to maintain confidentiality and guard against unwanted publicity while an allegation is being investigated or considered.

The case manager will take advice from the LADO, police and children's social care services, as appropriate, to agree:

- Who needs to know about the allegation and what information can be shared
- How to manage speculation, leaks and gossip, including how to make parents or carers of a child/children involved aware of their obligations with respect to confidentiality
- What, if any, information can be reasonably given to the wider community to reduce speculation
- How to manage press interest if, and when, it arises

### **Record-keeping**

The case manager will maintain clear records about any case where the allegation or concern meets the criteria above and store them on the individual's confidential personnel file for the duration of the case.

The records of any allegation that, following an investigation, is found to be malicious or false will be deleted from the individual's personnel file (unless the individual consents for the records to be retained on the file).

For all other allegations (which are not found to be malicious or false), the following information will be kept on the file of the individual concerned:

- A clear and comprehensive summary of the allegation
- Details of how the allegation was followed up and resolved
- Notes of any action taken, decisions reached and the outcome

- A declaration on whether the information will be referred to in any future reference
- In these cases, the school will provide a copy to the individual, in agreement with children's social care or the police as appropriate.
- We will retain all records at least until the accused individual has reached normal pension age, or for 10 years from the date of the allegation if that is longer.

## References

When providing employer references, we will:

- Not refer to any allegation that has been found to be false, unfounded, unsubstantiated or malicious, or any repeated allegations which have all been found to be false, unfounded, unsubstantiated or malicious
- Include substantiated allegations, provided that the information is factual and does not include opinions

## Learning lessons

After any cases where the allegations are *substantiated*, the case manager will review the circumstances of the case with the local authority's designated officer to determine whether there are any improvements that we can make to the school's procedures or practice to help prevent similar events in the future.

This will include consideration of (as applicable):

- Issues arising from the decision to suspend the member of staff
- The duration of the suspension
- Whether or not the suspension was justified
- The use of suspension when the individual is subsequently reinstated. We will consider how future investigations of a similar nature could be carried out without suspending the individual

For all other cases, the case manager will consider the facts and determine whether any improvements can be made.

## Non-recent allegations

Abuse can be reported, no matter how long ago it happened.

We will report any non-recent allegations made by a child to the LADO in line with our local authority's procedures for dealing with non-recent allegations.

Where an adult makes an allegation to the school that they were abused as a child, we will advise the individual to report the allegation to the police.

## Section 2: concerns that do not meet the harm threshold

This section applies to all concerns (including allegations) about members of staff, including supply teachers, volunteers and contractors, which do not meet the harm threshold set out in section 1 above.

The term 'low-level' concern does not mean that it is insignificant, it means that the behaviour towards a child does not meet the harms threshold.

Concerns may arise through, for example:

- Suspicion
- Complaint
- Safeguarding concern or allegation from another member of staff

- Disclosure made by a child, parent or other adult within or outside the school
- Pre-employment vetting checks

We recognise the importance of responding to and dealing with any concerns in a timely manner to safeguard the welfare of children.

### **Definition of low-level concerns**

The term 'low-level' concern is any concern – no matter how small – that an adult working in or on behalf of the school may have acted in a way that:

- Is inconsistent with the staff code of conduct, including inappropriate conduct outside of work, **and**
- Does not meet the allegations threshold or is otherwise not considered serious enough to consider a referral to the designated officer at the local authority

Examples of such behaviour could include, but are not limited to:

- Being overly friendly with children
- Having favourites
- Taking photographs of children on their mobile phone
- Engaging with a child on a one-to-one basis in a secluded area or behind a closed door
- Humiliating pupils

### **Sharing low-level concerns**

We recognise the importance of creating a culture of openness, trust and transparency to encourage all staff to confidentially share low-level concerns so that they can be addressed appropriately.

We will create this culture by:

- Ensuring staff are clear about what appropriate behaviour is, and are confident in distinguishing expected and appropriate behaviour from concerning, problematic or inappropriate behaviour, in themselves and others
- Empowering staff to share any low-level concerns as per section 7.7 of this policy
- Empowering staff to self-refer
- Addressing unprofessional behaviour and supporting the individual to correct it at an early stage
- Providing a responsive, sensitive and proportionate handling of such concerns when they are raised
- Helping to identify any weakness in the school's safeguarding system

Low-level concerns should be reported to the headteacher.

All low-level concerns should be recorded in writing. The record should include details of the concern, the context in which the concern arose and the action taken. The name of the individual sharing their concerns should also be noted. If the individual wishes to remain anonymous then that should be respected as far as reasonably possible. These records will be kept electronically under the confidential area within Access (The school's HR system). Schools should refer to the Handling Allegations Against Staff - Recording Form for further guidance and information.

### **Responding to low-level concerns**

If the concern is raised via a third party, the headteacher will collect evidence where necessary by speaking:

- Directly to the person who raised the concern, unless it has been raised anonymously
- To the individual involved and any witnesses

The headteacher will use the information collected to categorise the type of behaviour and determine any further action, in line with the school's staff code of conduct. The headteacher will be the ultimate decision-maker in respect of all low-level concerns, though they may wish to collaborate with the DSL.

Records will be reviewed so that potential patterns of concerning, problematic or inappropriate behaviour can be identified. In the event that patterns and/or wider cultural issues within the school are identified, the school will either;

- Take action through our disciplinary procedures
- Refer behaviour to the local authority designated officer/s where a pattern of behaviour moves from a concern to meeting the harms threshold
- Revise policies or implement extra training as appropriate, to minimise the risk of behaviour happening again

### **Record keeping**

All low-level concerns will be recorded in writing within the school's low-level concerns log. In addition to details of the concern raised, records will include the context in which the concern arose, any action taken and the rationale for decisions and action taken.

Records will be:

- Kept confidential, held securely and comply with the DPA 2018 and UK GDPR
- Reviewed so that potential patterns of concerning, problematic or inappropriate behaviour can be identified. Where a pattern of such behaviour is identified, we will decide on a course of action, either through our disciplinary procedures or, where a pattern of behaviour moves from a concern to meeting the harms threshold as described in section 1 of this appendix, we will refer it to the designated officer at the local authority
- Retained at least until the individual leaves employment at the school

Where a low-level concern relates to a supply teacher or contractor, we will notify the individual's employer, so any potential patterns of inappropriate behaviour can be identified.

### **References**

We will not include low-level concerns in references unless:

- The concern (or group of concerns) has met the threshold for referral to the designated officer at the local authority and is found to be substantiated; and/or
- The concern (or group of concerns) relates to issues which would ordinarily be included in a reference, such as misconduct or poor performance

### **Appendix 4: Specific safeguarding issues**

---

This appendix is based on the advice in Keeping Children Safe in Education, in particular annex B

Annex B includes information on further issues to be aware of, including child abduction and community safety incidents, children's involvement in the court system, children with family members in prison, county lines, modern slavery and cybercrime.

As per Part one of this guidance, if staff have any concerns about a child's welfare, they should act on them immediately. They should follow their own organisation's child protection policy and speak to the designated safeguarding lead (or a deputy).

**Where a child is suffering, or is likely to suffer from harm, it is important that a referral to local authority children's social care (and if appropriate the police) is made immediately.**

## **Children who are absent from education**

All staff should be aware that children being absent from school, particularly repeatedly and/or for prolonged periods, and children missing education can act as a vital warning sign of a range of safeguarding possibilities. This may include abuse and neglect such as sexual abuse or exploitation and can also be a sign of child criminal exploitation including involvement in county lines. It may indicate mental health problems, risk of substance abuse, risk of travelling to conflict zones, risk of female genital mutilation, so-called 'honour'-based abuse or risk of forced marriage.

Early intervention is essential to identify the existence of any underlying safeguarding risk and to help prevent the risks of a child going missing in future. It is important that staff are aware of their school or college's unauthorised absence procedures and children missing education procedures.

We will follow our procedures for unauthorised absence and for dealing with children who are absent from education, particularly on repeat occasions, to help identify the risk of abuse, neglect and exploitation, including sexual exploitation, and to help prevent the risks of going missing in future.

The school informs the local authority of any pupil who fails to attend school regularly, or has been absent without the school's permission for a continuous period of 5 school days or more, at such intervals as are agreed between the school and the local authority

We work in collaboration with the Local authority to take action to safeguard and promote the educational outcomes of those children missing in education (CMfE) and those children missing from home or care following their agreed systems and processes for reporting. This includes informing the local authority if a child leaves the school without a new school being named, families going abroad during term time, or where contact with a family ceases. No child is removed from the school role without the written consent from the Local Authority, and completion of the necessary CMfE checks supported by the Local Authority.

Staff will be trained in signs to look out for and the individual triggers to be aware of when considering the risks of potential safeguarding concerns which may be related to being absent, such as travelling to conflict zones, FGM and forced marriage.

If a staff member suspects that a child is suffering from harm or neglect, we will follow local child protection procedures, including with respect to making reasonable enquiries. We will make an immediate referral to the local authority children's social care team, and the police, if the child is suffering or likely to suffer from harm, or in immediate danger.

## **Elective Home Education (EHE)**

Many home educated children have an overwhelmingly positive learning experience. We would expect the parents' decision to home educate their child(ren) to be made with their child's best education at the heart of the decision. However, this is not the case for all, and home education can mean some children are less visible to the services that are there to keep them safe and supported in line with their needs.

Where a parent/carer has expressed their intention to remove a child from school with a view to educating at home, we work together to coordinate a meeting with parents/carers where possible to discuss the impact of this decision.

The Head of School will meet with all parents/carers and carers before a final decision has been made, to ensure the parents/carers have considered what is in the best interests of their child(ren). This is particularly important where a child has special educational needs or a disability, and/or has a social worker, and/or is otherwise vulnerable.

No child is removed from the school role without the written consent from the Local Authority, and completion of the necessary EHE forms provided by the Local Authority.

### **Child criminal exploitation (CCE) & Child sexual exploitation (CSE)**

We know that different forms of harm often overlap, and that perpetrators may subject children and young people to multiple forms of abuse, such as criminal exploitation (including county lines) and sexual exploitation.

In some cases, the exploitation or abuse will be in exchange for something the victim needs or wants (for example, money, gifts or affection), and/or will be to the financial benefit or other advantage, such as increased status, of the perpetrator or facilitator.

Children can be exploited by adult males or females, as individuals or groups. They may also be exploited by other children, who themselves may be experiencing exploitation – where this is the case, it is important that the child perpetrator is also recognised as a victim.

Whilst the age of the child may be a contributing factor for an imbalance of power, there are a range of other factors that could make a child more vulnerable to exploitation, including, sexual identity, cognitive ability, learning difficulties, communication ability, physical strength, status, and access to economic or other resources.

Some of the following can be indicators of both child criminal and sexual exploitation where children:

- appear with unexplained gifts, money or new possessions
- associate with other children involved in exploitation
- suffer from changes in emotional well-being
- misuse alcohol and other drugs
- go missing for periods of time or regularly come home late, and
- regularly miss school or education or do not take part in education.
- Children who have been exploited will need additional support to help keep them in education.

Child Sexual Exploitation (CSE) can be a one-off occurrence or a series of incidents over time and range from opportunistic to complex organised abuse. It can involve force and/or enticement-based methods of compliance and may, or may not, be accompanied by violence or threats of violence.

Some additional specific indicators that may be present in CSE are children who:

- have older boyfriends or girlfriends; and
- suffer from sexually transmitted infections, display sexual behaviours beyond expected sexual development or become pregnant.

Further information on signs of a child's involvement in sexual exploitation is available in Home Office guidance: [Child sexual exploitation: guide for practitioners](#)

If a member of staff suspects CCE, they will discuss this with the DSL. The DSL will trigger the local safeguarding procedures, including a referral to the local authority's children's social care team and the police, if appropriate.

### **County lines**

County lines is a term used to describe gangs and organised criminal networks involved in exporting illegal drugs using dedicated mobile phone lines or other form of "deal line". This activity can happen locally as well as across the UK - no specified distance of travel is required. Children and vulnerable adults are exploited to move, store and sell drugs and money. Offenders will often use coercion, intimidation, violence (including sexual violence) and weapons to ensure compliance of victims.

Children can be targeted and recruited into county lines in a number of locations including any type of schools (including special schools), further and higher educational institutions, pupil referral units, children's homes and care homes.

Children are also increasingly being targeted and recruited online using social media. Children can easily become trapped by this type of exploitation as county lines gangs can manufacture drug debts which need to be worked off or threaten serious violence and kidnap towards victims (and their families) if they attempt to leave the county lines network.

### **Children and the court system**

Children are sometimes required to give evidence in criminal courts, either for crimes committed against them or for crimes they have witnessed. There are two age appropriate guides to support children 5-11-year olds and 12-17 year olds.

The guides explain each step of the process, support and special measures that are available. There are diagrams illustrating the courtroom structure and the use of video links is explained.

Making child arrangements via the family courts following separation can be stressful and entrench conflict in families. This can be stressful for children. The Ministry of Justice has launched an online child arrangements information tool with clear and concise information on the dispute resolution service. This may be useful for some parents and carers.

### **Children with family members in prison**

Approximately 200,000 children in England and Wales have a parent sent to prison each year. These children are at risk of poor outcomes including poverty, stigma, isolation and poor mental health. The National Information Centre on Children of Offenders, NICCO provides information designed to support professionals working with offenders and their children, to help mitigate negative consequences for those children.

### **Cybercrime**

Cybercrime is criminal activity committed using computers and/or the internet. It is broadly categorised as either 'cyber-enabled' (crimes that can happen off-line but are enabled at scale and at speed on-line) or 'cyber dependent' (crimes that can be committed only by using a computer). Cyber-dependent crimes include:

- unauthorised access to computers (illegal 'hacking'), for example accessing a school's computer network to look for test paper answers or change grades awarded

- 'Denial of Service' (Dos or DDoS) attacks or 'booting'. These are attempts to make a computer, network or website unavailable by overwhelming it with internet traffic from multiple sources, and
- making, supplying or obtaining malware (malicious software) such as viruses, spyware, ransomware, botnets and Remote Access Trojans with the intent to commit further offence, including those above.

Children with particular skills and interest in computing and technology may inadvertently or deliberately stray into cyber-dependent crime. If there are concerns about a child in this area, the designated safeguarding lead (or a deputy), should consider referring into the Cyber Choices programme. This is a nationwide police programme supported by the Home Office and led by the National Crime Agency, working with regional and local policing. It aims to intervene where young people are at risk of committing, or being drawn into, low-level cyber-dependent offences and divert them to a more positive use of their skills and interests.

Note that Cyber Choices does not currently cover 'cyber-enabled' crime such as fraud, purchasing of illegal drugs on-line and child sexual abuse and exploitation, nor other areas of concern such as on-line bullying or general on-line safety. Additional advice can be found at: Cyber Choices, 'NPCC- When to call the Police' and National Cyber Security Centre - NCSC.GOV.UK.

### **Child-on-child abuse**

Child-on-child abuse is when children abuse other children. This type of abuse can take place inside and outside of school. It can also take place both face-to-face and online, and can occur simultaneously between the 2.

Our school has a zero-tolerance approach to sexual violence and sexual harassment. We recognise that even if there are no reports, that doesn't mean that this kind of abuse isn't happening.

Child-on-child abuse is most likely to include, but may not be limited to:

- Bullying (including cyber-bullying, prejudice-based and discriminatory bullying)
- Abuse in intimate personal relationships between children (this is sometimes known as 'teenage relationship abuse')
- Physical abuse such as hitting, kicking, shaking, biting, hair pulling, or otherwise causing physical harm (this may include an online element which facilitates, threatens and/or encourages physical abuse)
- Sexual violence, such as rape, assault by penetration and sexual assault (this may include an online element which facilitates, threatens and/or encourages sexual violence)
- Sexual harassment, such as sexual comments, remarks, jokes and online sexual harassment, which may be standalone or part of a broader pattern of abuse
- Causing someone to engage in sexual activity without consent, such as forcing someone to strip, touch themselves sexually, or to engage in sexual activity with a third party
- Consensual and non-consensual sharing of nude and semi-nude images and/or videos (also known as sexting or youth produced sexual imagery)
- Upskirting, which typically involves taking a picture under a person's clothing without their permission, with the intention of viewing their genitals or buttocks to obtain sexual gratification, or cause the victim humiliation, distress or alarm
- Initiation/hazing type violence and rituals (this could include activities involving harassment, abuse or humiliation used as a way of initiating a person into a group and may also include an online element)

Where children abuse their peers online, this can take the form of, for example, abusive, harassing, and misogynistic messages; the non-consensual sharing of indecent images, especially around chat groups; and the sharing of abusive images and pornography, to those who don't want to receive such content.

If staff have any concerns about child-on-child abuse, or a child makes a report to them, they will follow the procedures set out in section 7 of this policy, as appropriate. In particular, section 7.12 and 7.13 set out more detail about our school's approach to this type of abuse.

When considering instances of harmful sexual behaviour between children, we will consider their ages and stages of development. We recognise that children displaying harmful sexual behaviour have often experienced their own abuse and trauma, and will offer them appropriate support.

### **Domestic abuse**

Children can witness and be adversely affected by domestic abuse and/or violence at home where it occurs between family members. In some cases, a child may blame themselves for the abuse or may have had to leave the family home as a result.

Types of domestic abuse include intimate partner violence, abuse by family members, teenage relationship abuse (abuse in intimate personal relationships between children) and child/adolescent to parent violence and abuse. It can be physical, sexual, financial, psychological or emotional. It can also include ill treatment that isn't physical, as well as witnessing the ill treatment of others – for example, the impact of all forms of domestic abuse on children.

Anyone can be a victim of domestic abuse, regardless of gender, age, ethnicity, socioeconomic status, sexuality or background, and domestic abuse can take place inside or outside of the home. Children who witness domestic abuse are also victims.

Exposure to domestic abuse and/or violence can have a serious, long-lasting emotional and psychological impact on children and affect their health, wellbeing, development and ability to learn.

For schools that are part of Operation Encompass, if police are called to an incident of domestic abuse and any children in the household have experienced the incident, the police will inform the key adult in school (usually the designated safeguarding lead) before the child or children arrive at school the following day.

The DSL will provide support according to the child's needs and update records about their circumstances.

### **Operation Encompass**

Operation Encompass operates in all police forces across England. It helps police and schools work together to provide emotional and practical help to children. The system ensures that when the police are called to an incident of domestic abuse, where there are children in the household who have experienced the domestic incident, the police will inform the key adult (usually the designated safeguarding lead (or a deputy)) in school before the child or children arrive at school the following day. This ensures that the school has up to date relevant information about the child's circumstances and can enable immediate support to be put in place, according to the child's needs. Operation Encompass does not replace statutory safeguarding procedures. Where

appropriate, the police and/or schools should make a referral to local authority children's social care if they are concerned about a child's welfare. More information about the scheme and how schools can become involved is available on the Operation Encompass website.

Operation Encompass provides an advice and helpline service for all staff members from educational settings who may be concerned about children who have experienced domestic abuse. The helpline is available 8:00 to 13:00, Monday to Friday on 0204 513 9990 (charged at local rate).

Schools within the Partnership are active participants with Operation Encompass.

### **Private Fostering**

A private fostering arrangement is one that is made privately (without the involvement of a local authority) for the care of a child under the age of 16 years (under 18, if disabled) by someone other than a parent or close relative, in their own home, with the intention that it should last for 28 days or more.

A close family relative is defined as a 'grandparent, brother, sister, uncle or aunt' and includes half-siblings and stepparents; it does not include great-aunts or uncles, great grandparents or cousins.

Parents and private foster carers both have a legal duty to inform the relevant local authority at least six weeks before the arrangement is due to start; not to do so is a criminal offence.

Whilst most privately fostered children are appropriately supported and looked after, they are a potentially vulnerable group who should be monitored by the local authority, particularly when the child has come from another country. In some cases, privately fostered children are affected by abuse, neglect and exploitation, or be involved in trafficking, child sexual exploitation or modern-day slavery.

Schools have a mandatory duty to report to the local authority where they are aware or suspect that a child is subject to a private fostering arrangement. Although schools have a duty to inform the local authority, there is no duty for anyone, including the private foster carer or social workers to inform the school. However, it should be clear to the school who has parental responsibility.

### **Homelessness**

Being homeless or being at risk of becoming homeless presents a real risk to a child's welfare. The DSL, DDSL and members of the wider safeguarding team will be aware of contact details and referral routes into the local housing authority so they can raise/progress concerns at the earliest opportunity (where appropriate and in accordance with local procedures).

Where a child has been harmed or is at risk of harm, the DSL will also make a referral to children's social care.

### **Mental Health**

Where children have suffered abuse and neglect, or other potentially traumatic adverse childhood experiences, this can have a lasting impact throughout childhood, adolescence and into adulthood. It is key that staff are aware of how these children's experiences can impact on their mental health, behaviour, attendance and progress at school.

More information can be found in the Mental health and behaviour in schools guidance, colleges may also wish to follow this guidance as best practice. Public Health England. 149 has produced a range of resources to support secondary school teachers to promote positive health, wellbeing and resilience among children. See Every Mind Matters for links to all materials and lesson plans.

### **So-called 'honour-based' abuse (including FGM and forced marriage)**

So-called 'honour'-based abuse (HBA) encompasses incidents or crimes which have been committed to protect or defend the honour of the family and/or the community, including female genital mutilation (FGM), forced marriage, and practices such as breast ironing. Abuse committed in the context of preserving 'honour' often involves a wider network of family or community pressure and can include multiple perpetrators. It is important to be aware of this dynamic and additional risk factors when deciding what form of safeguarding action to take. All forms of HBA are abuse (regardless of the motivation) and should be handled and escalated as such. Professionals in all agencies, and individuals and groups in relevant communities, need to be alert to the possibility of a child being at risk of HBA, or already having suffered HBA.

### **Actions**

If staff have a concern regarding a child who might be at risk of HBA or who has suffered from HBA, they should speak to the designated safeguarding lead (or a deputy). As appropriate, the designated safeguarding lead (or a deputy) will activate local safeguarding procedures, using existing national and local protocols for multi-agency liaison with the police and local authority children's social care. Where FGM has taken place, since 31 October 2015 there has been a mandatory reporting duty placed on teachers that requires a different approach (see below).

### **FGM**

FGM comprises all procedures involving partial or total removal of the external female genitalia or other injury to the female genital organs. It is illegal in the UK and a form of child abuse with long-lasting harmful consequences.

The DSL will make sure that staff have access to appropriate training to equip them to be alert to children affected by FGM or at risk of FGM.

Section 7.5 of this policy sets out the procedures to be followed if a staff member discovers that an act of FGM appears to have been carried out or suspects that a pupil is at risk of FGM.

Indicators that FGM has already occurred include:

- A pupil confiding in a professional that FGM has taken place
- A mother/family member disclosing that FGM has been carried out
- A family/pupil already being known to social services in relation to other safeguarding issues
- A girl:
  - Having difficulty walking, sitting or standing, or looking uncomfortable
  - Finding it hard to sit still for long periods of time (where this was not a problem previously)
  - Spending longer than normal in the bathroom or toilet due to difficulties urinating
  - Having frequent urinary, menstrual or stomach problems
  - Avoiding physical exercise or missing PE
  - Being repeatedly absent from school, or absent for a prolonged period
  - Demonstrating increased emotional and psychological needs – for example, withdrawal or depression, or significant change in behaviour
  - Being reluctant to undergo any medical examinations

- o Asking for help, but not being explicit about the problem
- o Talking about pain or discomfort between her legs

Potential signs that a pupil may be at risk of FGM include:

- The girl's family having a history of practising FGM (this is the biggest risk factor to consider)
- FGM being known to be practised in the girl's community or country of origin
- A parent or family member expressing concern that FGM may be carried out
- A family not engaging with professionals (health, education or other) or already being known to social care in relation to other safeguarding issues

A girl:

- Having a mother, older sibling or cousin who has undergone FGM
- Having limited level of integration within UK society
- Confiding to a professional that she is to have a "special procedure" or to attend a special occasion to "become a woman"
- Talking about a long holiday to her country of origin or another country where the practice is prevalent, or parents/carers stating that they or a relative will take the girl out of the country for a prolonged period
- Requesting help from a teacher or another adult because she is aware or suspects that she is at immediate risk of FGM
- Talking about FGM in conversation – for example, a girl may tell other children about it (although it is important to take into account the context of the discussion)
- Being unexpectedly absent from school
- Having sections missing from her 'red book' (child health record) and/or attending a travel clinic or equivalent for vaccinations/anti-malarial medication

The above indicators and risk factors are not intended to be exhaustive.

### **FGM mandatory reporting duty for teachers**

Section 5B of the Female Genital Mutilation Act 2003 (as inserted by section 74 of the Serious Crime Act 2015) places a statutory duty upon teachers, along with regulated health and social care professionals in England and Wales, to report to the police where they discover (either through disclosure by the victim or visual evidence) that FGM appears to have been carried out on a girl under 18. Those failing to report such cases may face disciplinary sanctions. It will be rare for teachers to see visual evidence, and they should not be examining pupils or students, but the same definition of what is meant by "to discover that an act of FGM appears to have been carried out" is used for all professionals to whom this mandatory reporting duty applies. Information on when and how to make a report can be found at: [Mandatory reporting of female genital mutilation procedural information](#).

Teachers must personally report to the police cases where they discover that an act of FGM appears to have been carried out. Unless the teacher has good reason not to, they should still consider and discuss any such case with the school or college's designated safeguarding lead (or a deputy) and involve local authority children's social care as appropriate. The duty does not apply in relation to at risk or suspected cases (i.e. where the teacher does not discover that an act of FGM appears to have been carried out, either through disclosure by the victim or visual evidence) or in cases where the woman is 18 or over. In these cases, teachers should follow local safeguarding procedures. The following is a useful summary of the FGM mandatory reporting duty: [FGM Fact Sheet](#).

Further information can be found in the Multi-agency statutory guidance on female genital mutilation and the FGM resource pack particularly section 13.

### **Forced marriage**

Forcing a person into a marriage is a crime in England and Wales. A forced marriage is one entered into without the full and free consent of one or both parties and where violence, threats or any other form of coercion is used to cause a person to enter into a marriage. Threats can be physical or emotional and psychological. A lack of full and free consent can be where a person does not consent or where they cannot consent (if they have learning disabilities, for example). Nevertheless, some perpetrators use perceived cultural practices to coerce a person into marriage.

Schools and colleges can play an important role in safeguarding children from forced marriage. The Forced Marriage Unit (FMU) has created: Multi-agency practice guidelines: handling cases of forced marriage (chapter 8 provides guidance on the role of schools and colleges) and, Multi-agency statutory guidance for dealing with forced marriage, which can both be found at The right to choose: government guidance on forced marriage - GOV.UK ([www.gov.uk](http://www.gov.uk)) School and college staff can contact the Forced Marriage Unit if they need advice or information: Contact: 020 7008 0151 or email [fmufcdo.gov.uk](mailto:fmufcdo.gov.uk)

In addition, since February 2023 it has also been a crime to carry out any conduct whose purpose is to cause a child to marry before their eighteenth birthday, even if violence, threats or another form of coercion are not used. As with the existing forced marriage law, this applies to non-binding, unofficial 'marriages' as well as legal marriages.

### **Preventing radicalisation**

Children may be susceptible to radicalisation into terrorism. Similar to protecting children from other forms of harms and abuse, protecting children from this risk should be a part of a schools or colleges safeguarding approach.

**Extremism** is the vocal or active opposition to our fundamental values, including democracy, the rule of law, individual liberty and the mutual respect and tolerance of different faiths and beliefs. This also includes calling for the death of members of the armed forces.

**Radicalisation** is the process of a person legitimising support for, or use of, terrorist violence.

**Terrorism** is an action that endangers or causes serious violence to a person/people; causes serious damage to property; or seriously interferes or disrupts an electronic system. The use or threat must be designed to influence the government or to intimidate the public and is made for the purpose of advancing a political, religious or ideological cause.

Although there is no single way of identifying whether a child is likely to be susceptible to radicalisation into terrorism, there are factors that may indicate concern.

It is possible to protect people from extremist ideology and intervene to prevent those at risk of radicalisation being drawn to terrorism. As with other safeguarding risks, staff should be alert to changes in children's behaviour, which could indicate that they may be in need of help or

protection. Staff should use their judgement in identifying children who might be at risk of radicalisation and act proportionately which may include the designated safeguarding lead (or a deputy) making a Prevent referral.

### **The Prevent duty**

All schools and colleges are subject to a duty under section 26 of the Counter- Terrorism and Security Act 2015, in the exercise of their functions, to have “due regard to the need to prevent people from becoming terrorists or supporting terrorism”.<sup>153</sup> This duty is known as the Prevent duty.

The Prevent duty should be seen as part of schools’ and colleges’ wider safeguarding obligations. Designated safeguarding leads (and deputies) and other senior leaders in education settings should familiarise themselves with the revised Prevent duty guidance: for England and Wales, especially paragraphs 141-210, which are specifically concerned with education (and also covers childcare). The guidance is set out in terms of three general themes: leadership and partnership, capabilities and reducing permissive environments.

The school or college’s designated safeguarding lead (and any deputies) should be aware of local procedures for making a Prevent referral.

The DSL will undertake Prevent awareness training and make sure that staff have access to appropriate training to equip them to identify children at risk.

We will assess the risk of children in our school being drawn into terrorism. This assessment will be based on an understanding of the potential risk in our local area, in collaboration with our local safeguarding partners and local police force.

We will ensure that suitable internet filtering is in place, and equip our pupils to stay safe online at school and at home.

### **Channel**

Channel is a voluntary, confidential support programme which focuses on providing support at an early stage to people who are identified as being susceptible to being drawn into terrorism. Prevent referrals are assessed and may be passed to a multiagency Channel panel, which will discuss the individual referred to determine whether they are at risk of being drawn into terrorism and consider the appropriate support required. A representative from the school or college may be asked to attend the Channel panel to help with this assessment. An individual will be required to provide their consent before any support delivered through the programme is provided.

The designated safeguarding lead (or a deputy) should consider if it would be appropriate to share any information with the new school or college in advance of a child leaving. For example, information that would allow the new school or college to continue supporting victims of abuse or those who are currently receiving support through the ‘Channel’ programme and have that support in place for when the child arrives. Statutory guidance on Channel is available at: Channel guidance and Channel training from the Home Office.

### **Sexual violence and sexual harassment between children in schools**

Sexual violence and sexual harassment can occur:

- Between 2 children of any age and sex

- Through a group of children sexually assaulting or sexually harassing a single child or group of children
- Online and face to face (both physically and verbally)

Sexual violence and sexual harassment exist on a continuum and may overlap.

Children who are victims of sexual violence and sexual harassment will likely find the experience stressful and distressing. This will, in all likelihood, adversely affect their educational attainment and will be exacerbated if the alleged perpetrator(s) attends the same school.

If a victim reports an incident, it is essential that staff make sure they are reassured that they are being taken seriously and that they will be supported and kept safe. A victim should never be given the impression that they are creating a problem by reporting any form of abuse or neglect. Nor should a victim ever be made to feel ashamed for making a report.

When supporting victims, staff will:

- Reassure victims that the law on child-on-child abuse is there to protect them, not criminalise them
- Regularly review decisions and actions, and update policies with lessons learnt
- Look out for potential patterns of concerning, problematic or inappropriate behaviour, and decide on a course of action where we identify any patterns
- Consider if there are wider cultural issues within the school that enabled inappropriate behaviour to occur and whether revising policies and/or providing extra staff training could minimise the risk of it happening again
- Remain alert to the possible challenges of detecting signs that a child has experienced sexual violence, and show sensitivity to their needs

Some groups are potentially more at risk. Evidence shows that girls, children with SEN and/or disabilities, and lesbian, gay, bisexual and transgender (LGBT) children are at greater risk.

Staff should be aware of the importance of:

- Challenging inappropriate behaviours
- Making clear that sexual violence and sexual harassment is not acceptable, will never be tolerated and is not an inevitable part of growing up
- Challenging physical behaviours (potentially criminal in nature), such as grabbing bottoms, breasts and genitalia, pulling down trousers, flicking bras and lifting up skirts. Dismissing or tolerating such behaviours risks normalising them

If staff have any concerns about sexual violence or sexual harassment, or a child makes a report to them, they will follow the procedures set out in section 7 of this policy, as appropriate. In particular, section 7.12 and 7.13 set out more detail about our school's approach to this type of abuse.

Further information on the school's measures to deal with and prevent Harmful sexual behaviour are set out in other school policies and procedures, including Child-on-child and harmful sexual behaviour policy.

### **Serious violence**

Indicators which may signal that a child is at risk from, or involved with, serious violent crime may include:

- Increased absence from school
- Change in friendships or relationships with older individuals or groups
- Significant decline in performance
- Signs of self-harm or a significant change in wellbeing
- Signs of assault or unexplained injuries
- Unexplained gifts or new possessions (this could indicate that the child has been approached by, or is involved with, individuals associated with criminal networks or gangs and may be at risk of criminal exploitation (see above))
- Risk factors which increase the likelihood of involvement in serious violence include:
  - Being male
  - Having been frequently absent or permanently excluded from school
  - Having experienced child maltreatment
  - Having been involved in offending, such as theft or robbery

Staff will be aware of these indicators and risk factors. If a member of staff has a concern about a pupil being involved in, or at risk of, serious violence, they will report this to the DSL.

### **Checking the identity and suitability of visitors**

All visitors will be required to verify their identity to the satisfaction of staff and to leave their belongings, including their mobile phone(s), in a safe place during their visit.

If the visitor is unknown to the setting, we will check their credentials and reason for visiting before allowing them to enter the setting. Visitors should be ready to produce photographic identification. Visitors are expected to sign in at the school using the Sign-In system.

Visitors to the school who are visiting for a professional purpose, such as educational psychologists and school improvement officers, will be asked to show photo ID and:

- Will be asked to show their DBS certificate, which will be checked alongside their photo ID; or
- The organisation sending the professional, such as the LA or educational psychology service, will provide prior written confirmation that an appropriate level of DBS check has been carried out (if this is provided, we will not ask to see the DBS certificate)

All other visitors, including visiting speakers, will be accompanied by a member of staff at all times.

We will not invite into the school any speaker who is known to disseminate extremist views, and will carry out appropriate checks to ensure that any individual or organisation using school facilities is not seeking to disseminate extremist views or radicalise pupils or staff.

### **Non-collection of children**

If a child is not collected at the end of the session/day, we will make several attempts to make contact with all contacts held on file, including additional family members. If contact cannot be made, the child(ren) will be placed in extended services to enable leaders more time to try and contact family members. If necessary we will contact children's services for advice and support and seek police support if required.