

UNIFORM REMINDER - Please remember that full school uniform is expected for all pupils after Easter. We have been lenient over the last few weeks to give parents / carers a chance to get uniform sorted, but we begin checking uniform again from **Monday 19th April**. This will include black shoes or fully black trainers. Thank you for your support on this.

YEAR 5 & 6 – INTOUNIVERSITY HOLIDAY PROGRAMME

As per the recent email, Into University is offering a free Engineering Holiday Focus day on **Wednesday 7th April 10am – 1pm** for years 5 & 6. Students will take part in interactive activities about electrical, robotic and aeronautical engineering. If you would like more information please call 02380 772062 or email southampton@intouniversity.org

DATES TO REMEMBER

Thursday 1st April
Autism Awareness in School
Last day of term
Monday 19th April
School returns

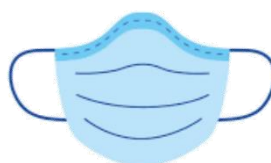
DOWN SYNDROME AWARENESS DAY



www.worlddownsyndromeday.org

Thank you to everyone that participated in Down Syndrome Awareness day by wearing odd socks.

PLEASE REMEMBER TO WEAR A FACEMASK WHEN YOU ARE ON SCHOOL SITE UNLESS YOU ARE EXEMPT. IT IS REALLY IMPORTANT THAT WE CONTINUE TO TRY OUR BEST TO KEEP EVERYONE IN OUR SCHOOL COMMUNITY SAFE. THANK YOU FOR YOUR CONTINUED SUPPORT



EU SETTLEMENT – DEADLINE 30th JUNE 2021

If you're an EU, EEA or Swiss citizen, you and your family can apply to the EU Settlement Scheme to continue living in the UK after 30 June 2021

Please visit:

<https://content.govdelivery.com/accounts/UKSOUTHAMPTON/bulletins/274ac>



STAR OF THE WEEK

Week ending 19/03



R Jeffers: **Matthew**
1 MiniGrey: **Mikey**
2 Lewis: **Anton**
3 Sparkes: **Mia**
4 Kipling: **Oliver**
4 Fine: **Tommy**
5 Hargrave: **Kayden**
5 Magorian: **Layla-Marie**
6 MacKenzie: **Lilly**
Mian: **Dylan**
AHT: **Josh**
Headteacher: **Nshira**

ATTENDANCE REMINDER

Please notify the school office on **02380390140** before 9am if your child is absent from school and give the reason for the absence. A phone call needs to be made every day your child is absent.

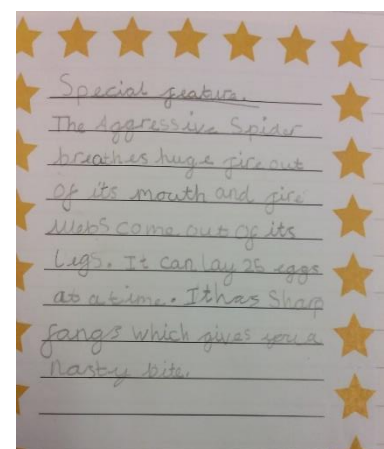
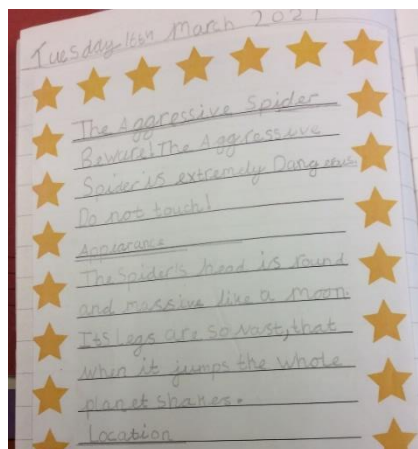
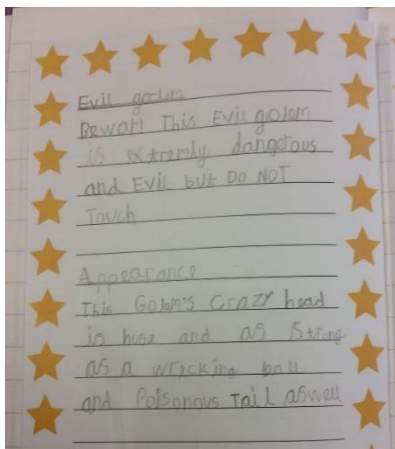
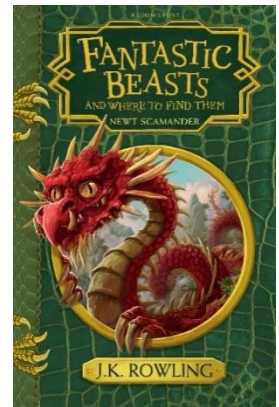
PARKING

We kindly request that parents and carers please refrain from parking in the school car park at all times. All spaces are allocated for staff. Spaces are very tight as it is as space is required by the roof contractors. Thank you in advance.

CLASS IN FOCUS – Year 2 Lewis

In Lewis class this week we have been focusing on writing a non-chronological report. Lewis class have been able to identify the special features of a non-chronological report such as; subheadings, expanded noun phrases and a title.

Each child has chosen a different mythical creature and used the book 'Fantastic Beast and Where to Find Them' to help inspire their ideas. We have had creatures such as 'The Ice Dragon, Evil Golem and The mermaid'. Below are just a few examples of their final published work, you can see their attention to detail and how well they have included the main features of a non-chronological report. Mr Benfield



SUPERSTAR SPORTS – EASTER EGGSTRAVAGANZA

Superstar Sports are offering a safe and engaging environment for your children This Easter!

Week 1 6-9th April Sports Spectacular & Easter fun
9am-3pm at Mansel Park Primary School

Week 2 12-16th April Football Madness & Gymnastics
9am-3pm at Mason Moor Primary School

£15 per day, £125 for ALL 9 days

For more information please visit www.superstarsportsuk.com or call 07772060840



ATTENDANCE

Jeffers	MiniGrey	Lewis	Sparkes	Kipling	Fine	Hargrave	Magorian	MacKenzie
95.9%	96.9%	96%	98.2%	93.9%	99%	95.7%	97.9%	95.9%

A BIG WELL DONE TO FINE CLASS FOR THE HIGHEST ATTENDANCE LAST WEEK!