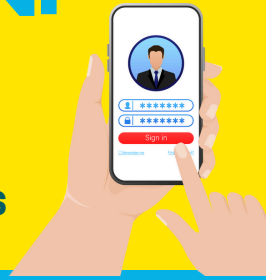


PARENT INFORMATION: ATTENDANCE

GOVERNMENT CHANGES TO ATTENDANCE IN ALL SCHOOLS



At a Glance

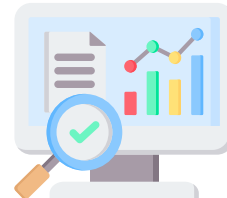
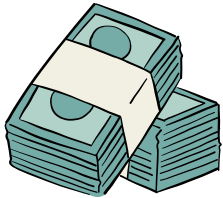
Higher penalty
charges

Per child, per
parent

More support
for parents

Closer
monitoring

Listening,
understanding



What has changed?

Working Together To Improve Attendance, 2024

Statutory guidance material for schools in England:

https://assets.publishing.service.gov.uk/media/66bf300da44f1c4c23e5bd1b/Working_together_to_improve_school_attendance_-_August_2024.pdf

The guidance supports schools to discharge their duties in relation to ensuring that children attend school regularly and well.

This is the biggest change to the guidance in the last few years - including:

- **Updated attendance codes** - which we use to reflect your child's attendance. These can be found on our website.
- **Electronic registers are now mandatory** - all schools need to save and send the registers to the DFE.
- **Data retention** - attendance records must be kept for a longer period, now six years.
- **Looking at the data more** - schools are expected to look carefully at persistent absence and consider why these issues exist.

Penalties for absence have changed

Increased fine amount

The penalty notice for unauthorised absences has been raised from £60 to £80 if paid within the initial timeframe.

Higher late payment penalty

If not paid within the stipulated period, the fine further increases to £160.

Per parent, per child

Each parent can receive a penalty fine of £80 per child for unauthorised absences, increasing to £160 if not paid within 21 days.

Early intervention

For some pupils, attendance at school is a barrier for reasons that don't always seem obvious to teachers or school leaders. Sometimes schools are not always considerate of the barriers that parents and carers feel persists - and it's important that we do. We aim to do the following this year:

- Greater emphasis on working with parents and local authorities to identify and address barriers to attendance
- Proactive measures to support students with attendance issues early on
- More joined-up working with our Education Welfare Officer (from Southampton City Council) to see if there are other measures to help families.
- Build stronger relationships with families to help overcome barriers to attendance. All children and our families will be treated with dignity to help you at a time of crisis.

Promoting good attendance

We will continue to promote rewards - such as the 96%+ attendance reward at the end of a term. However, better understanding the factors that have led to some children not managing this - may mean that more children get to experience this where we can see that genuine illness has been the barrier. Other incentives include:

- Certificates and badges
- Celebration assemblies and verbal rewards
- Family rewards for most-improved attendance

