

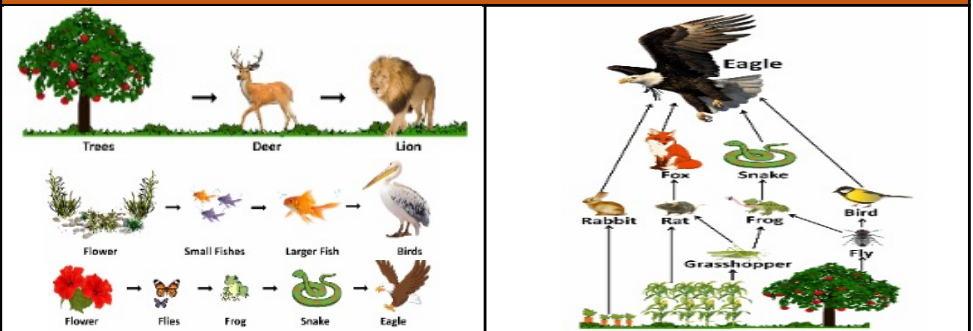


# Knowledge Organiser: AUTUMN 1

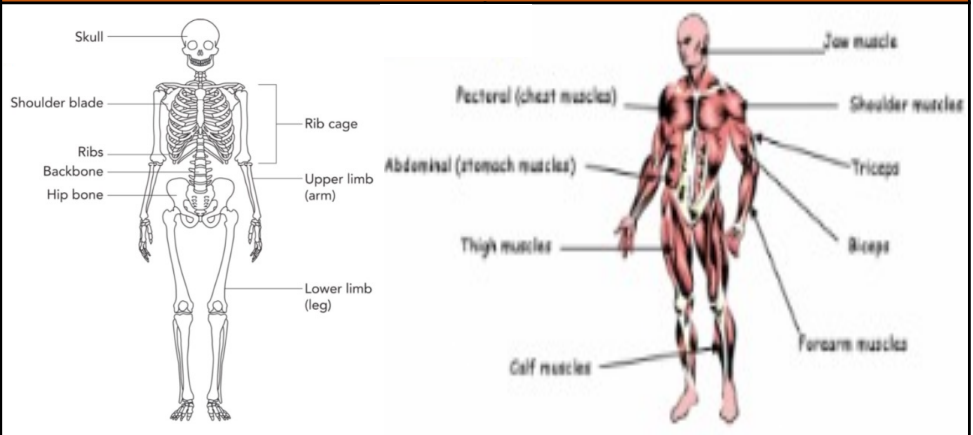
# Year 3 Science: Animals including Humans

Vocabulary	Meaning
diet	what you eat
vegetation	collection of plants
foliage	plant leaves
canines	pointed tooth between a mammal's incisors and premolars
molars	grinding tooth at the back of a mammal's mouth
incisors	narrow-edged tooth at the front, adapted for cutting
consumers	animal who eats plants or other animals
producers	organisms that produce their own food
predators	animals that eat other animals
carbohydrate	foods containing starch e.g. potatoes, pasta bread
protein	nutrient found in foods such as meat, milk, eggs and beans
nutrition	eating the food necessary to keep healthy
calories	the measure of energy in food
skeleton	the framework for bones for a body
joints	where two bones are attached
muscles	tissues in the body that can relax and contract
organs	part of the body that performs a function e.g. heart, lungs
endoskeleton	an internal skeleton, such as one for a human, dog or snake

## Key knowledge – Food Chain (left) and Food Web (right)



## Key knowledge – Human Skeleton, Bones and Muscles



## Animals can be grouped based on what foods they eat:

